



MARCH 2021

The first edition of eNews for 2021.

IN THIS ISSUE

PAGE 2

Pest update

Wasp wipe-out

Sanctuary-wide monitoring survey

Visit by predator detection dog teams

PAGE 3

Power tools sponsored by Bunnings

Donation of A24 Good Nature traps

Saltwater Bridge gifted by NCC

PAGE 4

New sanctuary staff

Voices from The Brook

Volunteers wanted

Sanctuary opening hours

Recently seen in the Sanctuary

PAGE 5

Guided walks

Visitor numbers to the Sanctuary

Sanctuary art

Corporate breakfast

PAGE 6

Supporter numbers at all time high

Dave Butler Memorial Fund established

Pre-paid entry vouchers available

Donations received

Books for sale

PAGE 7

The Sanctuary Is changing banks

Brook Business Club

Acknowledgments

Supporter profile

Newsletter survey

Sanctuary open day

TENA KOUTOU KATOA FROM OUR CHAIR

One of the great challenges chairing any community organisation is keeping abreast of the myriad of things that are always 'on the go', so I'd like to share a few of them with you.

At our AGM in October 2020 our membership was just 400. The challenge was to see if we could raise this to over 500 by our next AGM. Members did not reckon on the tenacity of our supporters. As at mid-March, barely 4 ½ months later, we stand at 600+ supporters. Well done you. When I see the enthusiasm and dedication of our volunteer supporters and staff, I should have realised the target may have been a little light!

Indeed, it is very encouraging to note that key indicators such as Sanctuary visitor and supporter numbers are up, as is income through our gate. Incidentally, we've noticed a pick-up in people deciding to become supporters after visiting the Sanctuary.

A key objective of our management is to be proactive; they're tasked with creating a series of the Sanctuary events to raise the profile and awareness of the Sanctuary in the wider community. To this end, we had a very successful Open Day in October 2020 with over 700 people through the gate, a corporate fundraising breakfast last month was attended by almost 50 people from our business community, and on April 11th we're hold our next Open Day. We're planning an even bigger and better Open Day than the previous one – make sure you get along!

We're very fortunate to have contracted the services of Rick Field as our Educator, Rick facilitates/works with visiting school groups in the one day a week he can give us. Education visits to the Sanctuary range from small pre-school groups through to large groups of high school students, student teachers, NMIT students and school holiday programmes. Since July last year Rick has spoken to 900+ plus students. Rick does an amazing job of developing and nurturing student's interest and awareness of the natural environment.



Enjoy reading this latest edition of eNews in the new format, there's lots to discover within these pages!

And finally, as always, our thanks for your ongoing support for the Brook Waimarama Sanctuary, if you haven't been up to the Sanctuary for a while, then I would encourage you to pay a visit sometime soon.

Nga mihi

Chris Hawkes, Chair BWST

PEST UPDATE

Following a weasel incursion in the 2019/20 season the Brook Waimārama Sanctuary Trust successfully eradicated all weasels in October 2020. Following the successful removal of a breeding rat and its offspring in September 2019 there have been no detections of rats since January 2020. The latest sanctuary wide survey in December 2020 resulted in no detection of any mammalian pests other than mice. All DOC200 traps have been activated and been serviced fortnightly since October without any pests caught.

One mustelid detection dog team as well as the only certified rat detection dog team surveyed the entire sanctuary in mid-January and early February 2021, respectively. No signs of mustelids or rats were found by either dog teams. The non-detection of any mammalian pests using a combination of passive (static detection devices) and active (detection dogs) pest detection methods provides strong indication that the Brook Waimārama Sanctuary approach to monitoring and controlling mammalian pests is the right one.

Post script 16 March: since writing the above, one rat has been trapped and killed within the sanctuary and we are responding as is usual to this single detection.

SANCTUARY-WIDE MONITORING SURVEY

This was recently successfully completed by 16 December and again on 14 March we are glad to report results included that no pest detections were reported from ~2850 pest monitoring stations.

VISIT BY PREDATOR DETECTION DOG TEAMS

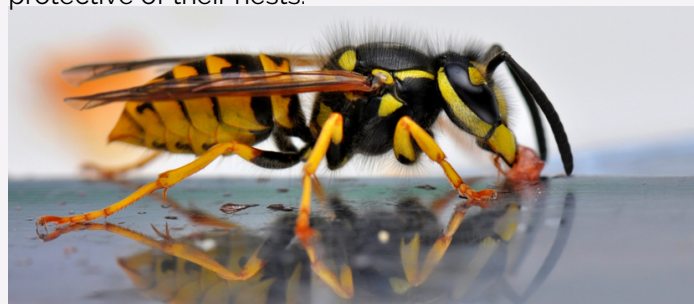
Mustelid and rat detection dogs have recently checked the whole of the Sanctuary for pests as part of our ongoing biosecurity monitoring. Two mustelid (stoat, weasel and ferret) detection dogs were used to check every second monitoring line plus some additional lines where we had previously caught weasels. No mustelids were detected.

Two rat detection dogs then checked every monitoring line in the Sanctuary and again there was no hint of a pest. We were lucky to get the only two rat-only detection dogs in the country, ie dogs that can detect rats whilst ignoring mice.

So with no pests detected in either survey and with the recent Sanctuary-Wide Survey (SWS) also finding no pests we have compelling evidence that the Sanctuary is free of introduced mammalian predators. This is a great result given the steep rise in rat and mustelid numbers following last year's mega beech mast.

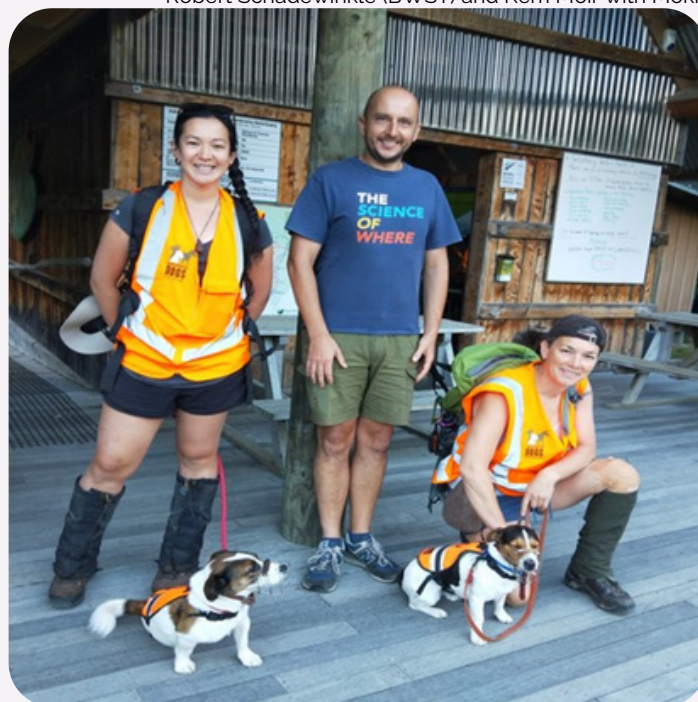
WASP WIPE-OUT

Another imported invasive species which is controlled annually is the German wasp whose numbers (bio-mass) grow exponentially unless controlled. These wasps are ground nesting and every year towards the end of summer they change to feeding on protein, which means many creatures, from birds to insects, become a target. The wasps, together with their high bio-mass, pose a danger to the native species we are trying to protect. Not least of the problem is that they share ground space with our track maintenance people and monitors and, when disturbed, are violently protective of their nests.



The Wasp Wipeout involves putting out a poison called Vespex designed to attract common and German wasps when they are in their protein feeding phase. There are around 870 Vespex stations installed inside the sanctuary, and each is filled with about 25 grams of Vespex. It is left out for around a week (of fine weather) and then collected again. During that time the worker wasps do the job of finding the poison and delivering it to their hive to feed their larvae and queen. It takes a remarkably small amount of Vespex to do the job. Each year a team of dedicated volunteers and staff scramble to deploy Vespex during the window of opportunity at the end of summer.

Image below, L to R: Chelsea Price with Baxter, Robert Schadewinkle (BWST) and Kerri Moir with Moki.



SALTWATER BRIDGE GIFTED TO THE SANCTUARY

We're delighted to report that the old foot bridge that once spanned the Saltwater Creek (near the Trafalgar Centre) until being replaced in 2019 by the new wood structure has been gifted to the Brook Sanctuary by the Nelson City Council. At a Council meeting on Thursday, 18 March, the Council agreed to gift the bridge to the Brook Waimārama Sanctuary Trust.

The narrow bridge was replaced in 2019 as part of Council's move to improve the connection between the city and the sea. The new, architecturally designed and award-winning bridge is three-metres wide, making it easier for cyclist and pedestrians using the Maitai/Mahitahi River Walkway to navigate.

The former bridge has remained in storage as Nelson City Council surplus while a search for alternative locations took place. The Brook Waimārama Sanctuary Trust requested the bridge and intends to split it and install it as two footbridges across the Brook Stream within the Sanctuary.

The bridge will be put to great use in the Sanctuary as a much-needed improvement to existing stream crossings along the walking track network. The donation will improve the visitor experience of accessing some of our more challenging walking tracks and allow more visitors and volunteers to see more of the Sanctuary.

Nelson Mayor Rachel Reese said "gifting the former Saltwater Creek Bridge to a community group who plan to reuse and repurpose it for the benefit of our wider community and visitors is exactly the kind of action a Smart Little City should take. I hope to see the new bridge in action in its new location very soon."

The Trust must obtain all necessary consents for the bridge, collect and transport it to the Sanctuary, cut, install and maintain the bridge, at its own cost. The Trust will be relying on volunteers to help with much of this work, and offers of assistance had already come in.



DONATION OF 340 A24 GOOD NATURE TRAPS

The Fiordland Lobster Company have donated 340 x A24 Good Nature Traps to the Sanctuary, a very generous gift for which we are most grateful. We intend deploying more of these traps along the pest fence line.



The Fiordland Lobster Company is dedicated to the sustainable fishing and live export of wild-caught southern rock lobster (New Zealand crayfish). Now, 30 years after the organisation was born, and as the largest southern rock lobster exporter with sites around New Zealand and Australia, our head office is still based in Te Anau, nestled in the heart of Fiordland.

Just like our lobster, the Fiordland and West Coast landscape is untamed. We recognise the significance of the remarkable environment that we have the privilege of operating in. Fiordland Lobster Company's work in conservation and preservation of marine and terrestrial environments was inspired by our original founding fishermen, who had a unique bond with the southern New Zealand fiords, and empathy for the exceptional waters we work in.

NEW TOOLS SPONSORED BY BUNNINGS NELSON

We have been looking for sponsorship of battery-powered tools for some time, and we're thrilled to report that we have now secured local support from Bunnings Nelson for some 18V AEG battery powered tools that will be more suitable for track and fence work.

The power tools include;

- hammer drill
- compact driver
- 2x batteries and charger
- carry bag
- and the local area AEG rep has added a circular saw.

As well as the new battery power tools, we now have a powerpass account that gives us special trade discounts in store.

Nelson Bunnings Activities Organiser Robin Johnson is enthusiastic and excited about the new partnership and she is very keen to work with the Sanctuary.

NEW BWST STAFF

Late last year the Sanctuary was extremely fortunate to secure Department of Conservation 'Jobs for Nature' funding from the Nelson City Council through the Kotahitanga mō te Taiao Alliance, a top of the South Island alliance of iwi, councils and DOC. The additional funding has enabled us to employ new staff, the equivalent of two full-time staff, for a period of two years.

The Visitor Centre & Volunteer Coordinator role has been filled by Kirsten Rødsgaard-Mathiesen who is doing a great job with the volunteers welcoming visitors to the Sanctuary and helping with coordinating and supporting volunteers.

The Communications and Marketing Coordinator role has been filled by Hal Martin who has refreshed our Instagram and Facebook accounts and is updating the website with more information. Hal is also coordinating the upcoming events including the next Sanctuary Open Day on 11 April, and coordinated the fundraising breakfast held at the Sanctuary 23 February.

The Biosecurity Ranger role has been filled by Steffi Heberd, who will work closely with Sanctuary staff and volunteer teams involved with biosecurity.

A further role of Educator/Storyteller will shortly be filled.



Kirsten
Rødsgaard-Mathiesen



Hal
Martin



Steffi
Heberd

VOICES FROM THE BROOK

Our new fortnightly 15-minute show on FreshFM called 'Voices from the Brook' is hosted by Kirsten Rodsgaard-Mathiesen and is full of updates and short interviews with volunteers, visitors and staff. Tune in and listen at your leisure:

[Voices from the Brook \(freshfm.net\)](https://www.freshfm.net)

VOLUNTEERS WANTED

The Sanctuary is always keen to hear from individuals interested in becoming a volunteer. At the moment we are particularly keen to hear from anyone interested in joining the track cutting & maintenance, or weed control teams. Our other volunteer teams are visitor centre hosting; pest monitoring; bird monitoring; fence checking and maintenance; planting; and asset management.

If you're interested and want to find out more, [check out the become a volunteer page](#) on the website,

SANCTUARY HOURS

From 1 March

Thursday, Friday, Saturday & Sunday 9am to 5pm

April

Friday, Saturday & Sunday 9am to 4pm

School holidays open six days a week (Tue - Sun)

Good Friday & Easter Sun 9am to 4pm

ANZAC Day 26 April

1pm to 4pm

May

Friday, Saturday & Sunday 10am to 4pm

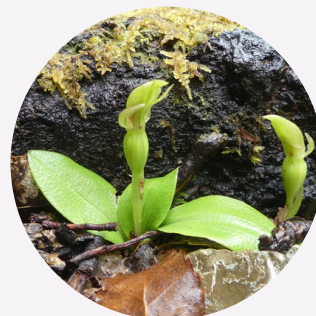
RECENTLY SEEN IN THE SANCTUARY



kakaruwai (S. Island Robin)

Petroica australis australis

The kakaruwai, Michael Humphries spotted no less than 7 of these during the recent sanctuary-wide monitoring survey.



The first of two orchids spotted recently believed to be species not previously seen in the Sanctuary
Chiloglottis cornuta



The second orchid recently spotted and subject to confirmation, believed to be
Adenochilis gracilis

Both orchids have been posted to the i-naturalist site for confirmation,



miromiro (tomtit)

Petroica macrocephala

Photo credit: Deb Corbett

GUIDED WALKS

We are really excited to now be offering regular guided tours through the Sanctuary for anyone wanting to maximise their knowledge and/or time while visiting. A gentle walk of 60-90 minutes, each tour will stop at several points of interest with an experienced volunteer guide explaining:

- The history of the valleys
- Stories of the bush including history and Māori use of plants
- The plants and animals all around us
- The conservation work we are doing and why it's important for all of us.

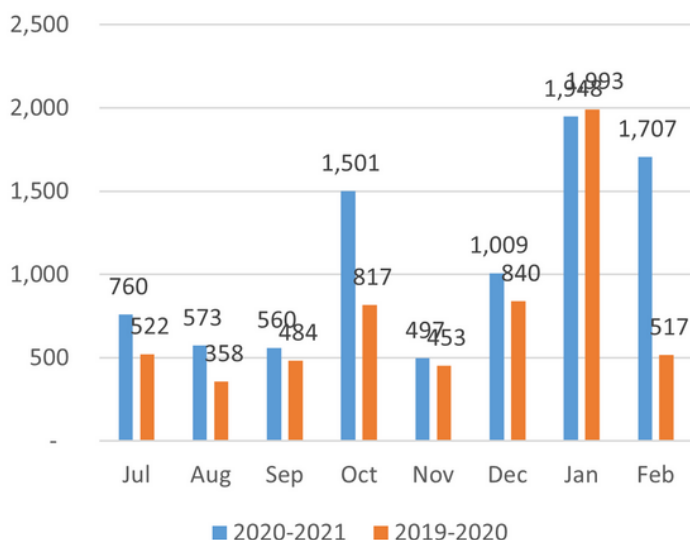
The tours depart at 10.30am from the Visitor Centre, every Sunday, and other selected days during the summer ([check our website](#) for details). We will be able to tailor guided tours for groups around specific topics relating to the Sanctuary.



VISITOR NUMBERS

We're delighted to report that visitor numbers to the Sanctuary are holding up well, despite the crazy COVID19 times and the loss of international visitors. Since July 2020, the start of our financial year, visitor numbers have been higher than the previous year every month with the exception of January – and it was close!

Visitors to Sanctuary



SANCTUARY ART

We recently unveiled a new piece of art in the Sanctuary, positioned on The Loop track, close to the Brook Stream.

The sculpture, by local sculptor Martin Love, was inspired by, and pays tribute to, the years of hard work, commitment, and generosity the hundreds of volunteers, sponsors and donors have given the Sanctuary. The piece is a rendition of the Sanctuary's logo, carved from Oamaru stone (aka totara limestone).

Acknowledging that our conservation efforts rely on many contributors from the community, family and friends, Martin in turn volunteered his skills to honour all those involved. Martin has an on-going family connection with the Sanctuary.



CORPORATE BREAKFAST

We held our first fundraising breakfast, generously sponsored by Pitt and Moore Lawyers on 23 February, which was novel for numbers of reasons. We put this on in the Beech Glade Classroom at dawn; 42 paid guests attended. Guest feedback was universally positive, with many saying they loved having breakfast in the forest. People agreed that the glade could be used for other purposes as well, such as a place for hire, professional development, yoga. So watch this space!

Based on the success of this event, we are looking at putting this on once a year, in the same place.



SUPPORTER NUMBERS ARE AT AN ALL TIME HIGH

Paid up supporters now stands at ~600 (the highest it's ever been we think). But, we're not resting on our laurels as we still have 160+ past supporters (aka members) who have "lapsed" members, and another 1,000 people on this newsletter distribution list who have never been a financial supporter as far as we know (but many of them have been donors). Why not join today as a financial supporter, your annual subscription entitles you to free entry to the Sanctuary (on days/times we're open to the general public).

Thanks to the generosity of an anonymous benefactor every new supporter subscription and renewals, between 1 March and 30 June 2021, will be matched \$ for \$ up to a maximum of \$50,000 from our benefactor. If you're not a paid-up supporter, we encourage you to become one before 30 June. [Click here to sign up.](#)

DAVE BUTLER MEMORIAL FUND FOR SPECIES REINTRODUCTIONS

The Brook Sanctuary has now established a memorial fund in the name of Dr Dave Butler QSM. Dave was a founding member of the Brook Waimarama Sanctuary Trust in 2004 and Trust Chair until 2019. He was a passionate advocate for the Sanctuary, and a champion for our vision to reintroduce species lost from the Sanctuary ecosystem. With this in mind, a memorial fund has been established to fund the reintroduction of species back to the Sanctuary. The memorial fund has been kicked-off by a generous seeding donation from John and Sally Palmer.

If you would like to donate to the Dave Butler Memorial Fund, [click here](#) and make sure you tick the "This is a donation for the Dave Butler Memorial Fund for species reintroductions" tick box.

PRE-PAID SANCTUARY ENTRY VOUCHERS

Pre-paid vouchers for entry to the Brook Sanctuary are now available for purchase through our website. These make great gifts to slip in a birthday card, or to present to employees, or as gifts for family or friends. [Click here](#) to purchase pre-paid entry vouchers, we have vouchers available for individuals (adults), families (2 adults and up to 3 children 15 years and under), or for community services card, gold card or student ID card holders.

DONATIONS & OTHER FUNDS RECEIVED RECENTLY

We are grateful for the financial support offered to the Sanctuary.

- \$2,000 Ngati Kuia Trust towards the cost of the October Open Day keynote speaker, Ruud Kleinpaste
- \$4,000 Debbie Watson, Tall Poppy Real Estate, towards speaker and volunteer support
- PC screens from WPS Nelson office
- \$2,500 to improve radio coverage within the Sanctuary
- \$1,000 towards the assets teams requirements
- \$1,145 for purchase of brush cutters
- \$1,500 towards operations team requirements
- Two separate donations of \$10,000 each from private individuals
- Books written by Dave Butler donated by Donna Butler, plus the proceeds (\$658) from the collection at Dave's funeral
- A BBQ table supplied by Bernadette Power & family
- \$399 donated by Switch Lighting
- \$1,150 Booster Wine Group for cinema advertising
- Nelson Bunnings have given the Sanctuary a range of battery powered AEG tools

BOOKS FOR SALE

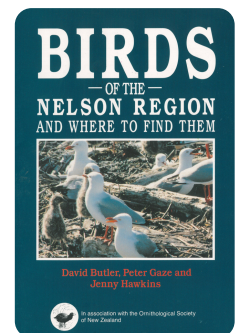
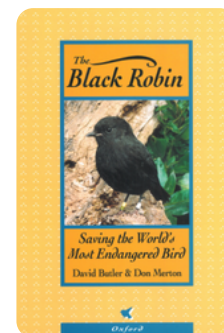
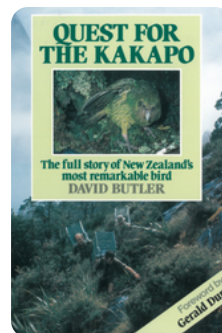
Thanks to Donna Butler (Dave's wife) we have a limited supply of three books written (or co-authored) by Dave for sale. You can purchase your own copies of:

- The Black Robin: Saving the World's Most Endangered Bird. (\$45 per copy)
- Quest for the Kakapo: the full story of New Zealand's most remarkable bird, (\$45 per copy)
- Birds of the Nelson region and where to find them, (\$25 per copy)

Available to purchase through our website, [click here](#) to purchase yours – numbers are limited, so don't delay.

Also available, we have a small number of the following available as well:

- Waimarama Sanctuary Mosses by Bill & Nancy Malcom and Jim Shevock



CHANGING BANKS

We've moving our banking from one of the large Australian owned banks to community-owned NBS which is also the Sanctuary's newest major sponsor. Changing to a NZ-owned bank has been suggested by supporters at a couple of the Sanctuary's AGMs, and the Trust is pleased to report that this is now almost complete.

Our new NBS account number is:

03-1354-0561993-00

Please update your records (especially if you have us saved in your online banking payees list).

BROOK BUSINESS CLUB

In 2018 the Trust launched the Brook Business Club, to develop/strengthen our ties to many of the businesses in the Nelson/Tasman region, and to develop new income to support the activities of the Sanctuary. We asked businesses to commit to a three-year programme at a cost of \$500+GST per annum. The programme has seen 60+ businesses joining, and while we've lost a few this year due to COVID-19, we're delighted with the number of businesses who have recently fulfilled their third-year commitment. We are continuing to evolve the programme to make it more attractive and meaningful to businesses supporters, and would welcome your feedback; and of course we're always keen to sign-up new business club supporters. [Click for more details](#), or contact: deborah.mcconochie@brooksanctuary.org.nz

ACKNOWLEDGMENTS

We would like to acknowledge our corporate supporters who have generously supported us recently.

The Sanctuary Open Day in October was sponsored by Pic's Peanut Butter. Pic's have been a long-time supporter of the Sanctuary, if you pop out to Pic's Peanut Butter World in Stoke, you'll see a display promoting the Sanctuary. Pics are also sponsoring the Open Day in April.

The Open Day Fun Run is being sponsored by RWCA accountancy+advisory.

The fundraising/corporate breakfast in February was sponsored Pitt and Moore Lawyers – another long-time supporter of the Sanctuary and a business club member.

DONATION RECEIPTS

If you would like a single consolidated receipt for your tax deductible donations made during the tax year ending 31 March, contact: info@brooksanctuary.org.nz

WANT TO UNSUBSCRIBE?

If you no-longer wish to receive eNews, please send an email to info@brooksanctuary.org.nz with "UNSUBSCRIBE eNews" in the subject line.

SUPPORTER PROFILE

Nelson Pine Industries Ltd

As a Gold Supporter, Nelson Pine Industries is helping the Brook Waimarama Sanctuary achieve its conservation aims for the Nelson Tasman region, and New Zealand, which include the re-introduction of lost and endangered species. This level of support demonstrates Nelson Pine Industries' active commitment to enriching our community through connection with nature.

NEWSLETTER SURVEY

We've created a short online survey to get reader feedback on eNews, this should only take a few minutes to complete. Welcome your thoughts/input.

You can find the survey [here](#)

SANCTUARY OPEN DAY

The Brook Waimarama Sanctuary has an Open Day sponsored by Pic's Peanut Butter on Sunday, 11 April. The day starts at 10am and finishes at 4pm. There will be heaps on offer, including:

- Free entry, free guided tours in the Sanctuary
- 2 Fun Runs - the RWCA Sanctuary Fun Run for adults at 10.30am and the Redwood Kids Fun Run at 12.30pm
- Food stalls, coffee cart, ice creams, drinks
- Live acoustic music
- Information stalls on a conservation theme
- Fun kids' activities

For more details visit our website [here](#)

