



DECEMBER 2021 IN THIS ISSUE

PAGE 2

Year in review - message from Chief Executive Ru Collin

PAGE 3

COVID mandate
Kākāriki karaka - second translocation

PAGE 4

Species profile - kākāriki karaka

PAGE 5

Pest control collaboration with NCC

PAGE 6

Installation of Flagstone Bridge

PAGE 7

Further collaboration & sponsors support

PAGE 8

Another species translocation approved

PAGE 9

Sanctuary Guided Walks
Opening Hours
Current projects
Upcoming events

PAGE 10

Fundraising and supporter numbers update

PAGE 11

Donations and support

PAGE 12

Sanctuary Foundation news
Leaving a bequest to the Sanctuary
Town office moves at Morrison Square

PAGE 13

Announcing a new sponsor

PAGE 14

Business club and support profiles

PAGE 15 & 16

Education resources and activities

PAGE 17

Fungi galore
Recently seen in the Sanctuary

PAGE 18

Happy holidays!

KEEPING YOU INFORMED

TĒNĀ KOUTOU KATOA FROM OUR CHAIR

For many New Zealanders this calendar year has undoubtedly been prodigiously frustrating and slow. This has not been the case with the Sanctuary albeit we have had to cancel or rearrange open days, supporter functions, events and meetings.

Of paramount importance to the Sanctuary has been the successful translocation of two endangered species, the tīeke (saddleback) and kākāriki karaka (orange fronted parakeet). These events have been the culmination of many years of dedicated volunteers' efforts and supporter activity, along with the work of dedicated staff to achieve this ultimate purpose of the Sanctuary.

The translocations are also a testament to stature, ongoing trust and confidence others such as the Department of Conservation, Te Taihiti iwi, Ngāi Tahu and others have that the Sanctuary provides a well managed, protected environment for some of Aotearoa's most endangered species. The reintroductions also recognise the extensive skill set amongst the numerous volunteers, management and staff providing for a major conservation realm within this region. Recent translocations illustrate the vital importance of organisations such as the Brook Waimārama Sanctuary for the reintroduction and preservation of our treasured heritage, our taonga.

I am frequently awed at the various "facts or doings" that I hear from both staff and volunteers. It is hard to believe we have so many wilding pines within the Sanctuary, but the team will treat over a 1,000 by the end of this calendar year. Then there is the current internal competition amongst the weed control teams for the photo of old man's beard and wild passionfruit vines with the greatest circumference that they have dealt with. The tenacity of many of our volunteers is truly impressive, many of them walk considerable distances in a day spent volunteering in the Sanctuary - up, under or through steep forested areas, carrying out vital work. It's frequently eye watering stuff, passed off with little more than a nonchalant comment or two.

So on behalf of the Board of Trustees, I extend to you, our volunteers and supporters, our sincere thanks, and wish you, and all your loved ones the best for the festive season. A big thank you too for the year's support, travel safe, and we look forward to welcoming you back in the new year.



Ngā mihi
Chris Hawkes, Chair BWST

2021 IN REVIEW

2021 has been another challenging one for the visitor sector of which we are a part. The borders have been closed to international visitors, and with our largest city in lock-down for about three months, both of these events have severely impacted visitor numbers for the tourism sector and others such as hospitality.

However, the news is not all bad, the Sanctuary has had a good year with a number of significant achievements to our credit.

- Environment: Sanctuary is free from introduced mammalian pests (aside from mice) and is considered bio-secure by DOC from late 2019. Pest fence integrity is effective and reliable although we are constantly maintaining the fence.
- In April we successfully translocated our first species into the Sanctuary with the arrival of tīeke | saddleback followed by kākārīki karaka | orange-fronted parakeet in November and December 2021.
- Social: we have grown our supporter base to almost 1,000, a major achievement when we reflect that three years ago this number stood at less than 150. Since 1 January 2021 we've seen almost 12,000 visitors to the Sanctuary.
- Tourism NZ Qualmark awarded the Sanctuary 'Gold Standard' status (up from our previous silver status). Tourism NZ also credited us with its 'COVID Clean' award.
- We have improved training programs for volunteers in first aid, 4WD driving, equipment operation.
- First net promoter score (survey of visitor satisfaction) was just above average for the tourism sector.
- Our volunteer numbers now stand at over 300 volunteers with 55 new people placed in teams in July-November period. Our volunteer 'onboarding' process has been refined and documented with much improved results.
- Cultural: our health and system systems have been accredited to ISO 45001 standards.
- We have worked hard on developing our education program to contain a storytelling element to explain the forest/ngahere from a Māori perspective, the Sanctuary's aims, and purpose.
- We have received increased support from our business supporters, a base of ~100 companies, with increased support in terms of both cash and 'in-kind' support/services or goods. We have also committed to try and spend our operations budget with local and regional businesses that support the Sanctuary.
- We have measured our carbon footprint with assessments in 2019/20 and 2020/21 and certified as a carbon zero business.
- Financial: in the year ending 30 June 2021 we achieved a cash surplus of \$138,104 (before depreciation). For 2021/22 at half-year actual operational expenditure is close to budget.
- We retained our sponsorships and confirmed two new gold sponsors, NBS (Nelson) and Platinum Asset Management (Sydney).
- We confirmed financial support for future projects such as kākā aviaries (for their eventual reintroduction), solar panels and a building upgrade for the Visitor Centre, educational resources, clothing and Sanctuary projects, notably the Loop Track handrails and Flagstone Bridge projects.
- Our Brook Business Club membership support held over 2021, despite COVID19 disruption affects upon local and national business.
- We have been successful in attracting increased government support following the impacts of COVID19 including significant funding for a three-year weed control project initiated from October 2021.

None of these achievements would have been possible without the work of a dedicated team of volunteers, staff and Trustees, so to these hard working individuals, my thanks for all your efforts in 2021.

Our thanks also to the many individuals, businesses, funders, sponsors and other organisations who support us with their time and money, we could not do what we do without your support.

On behalf of the Brook Waimārama Sanctuary team, have a wonderful holiday season - make sure you get into the Sanctuary over the holiday period.

Enjoy this bumper end-of-year issue of eNews!



Ngā mihi
Ru Collin, Chief Executive

COVID MANDATE

The Brook Waimārama Sanctuary Trust has implemented COVID mandate procedures for our staff and volunteers requiring visitors to show a valid NZ 'My Vaccine Pass' to enter and enjoy the Sanctuary, at 651 Brook Street, Nelson, effective December 3, 2021. This policy for entry to the Sanctuary is to provide a safe environment for our volunteer workers, visitors and staff.

Please know that this was not a decision made lightly. We understand, intimately, the difficult position that this move will place some members of our community in and apologise for the inconvenience and potential hurt that this may cause.

At this time, we will not be entering into any discourse around this decision, and ask that you please exercise patience and understanding - and to refer to our [COVID-19 framework](#) listed on our website and booking pages. We reserve the right to change the policy as the situation changes.

We hope that these frameworks provide extra safety precautions for our community, and to allow us to continue to entertain and inspire you to visit the Sanctuary and to connect with nature for many years to come.

KĀKĀRIKI KARAKA

SECOND WAVE OF TRANSLOCATIONS TAKING PLACE

The Brook Waimārama Sanctuary is thrilled to have welcomed a second arrival of kākāriki karaka (orange fronted parakeet) from 20 December. Twenty birds were flown from their current home at the Isaacs Conservation Wildlife Trust (ICWT) in Christchurch to Nelson Airport, followed by helicopter transfer to the Sanctuary. These birds were taken down to our aviaries where they were acclimatised for a few days before being released to join the other 20 birds currently in the Sanctuary.

As well as the conservation (or ecological) significance, the translocation of the manu is culturally significant as kākāriki karaka are a taonga species and the birds are being transferred outside of the Ngāi Tahu takiwa. Both sending iwi (Ngāi Tahu) and receiving (Te Taihū) iwi will act as custodians for the birds indefinitely.

The Brook Waimārama Sanctuary are expecting the arrival of more manu in the new year, as the Sanctuary represents an exciting new site for the Kākāriki Karaka Recovery Programme to take place. As the breeding season begins, our staff and volunteers are monitoring the birds closely with the hope that they will start to pair up and find suitable nesting sites. The first translocation was a great success, so we are expecting the second and third wave of translocations to follow suit.



Pic showing Robert Schadowinkel our ecologist transporting four kakariki in a box to temporary aviaries where they are held for 2-3 days before being released into the Sanctuary. Pic by Andy MacDonald

SPECIES PROFILE KĀKĀRIKI KARAKA

Cyanoramphus malherbi (Orange-fronted parakeet)

Kākāriki karaka, also known as orange-fronted parakeet, were once abundant throughout New Zealand, especially the beech forests of the South Island. Following the arrival of Europeans, predation pressure and habitat loss drastically reduced their numbers. They were declared extinct twice during the 20th century. In 1980 a small population was rediscovered in Lake Sumner National Park. Further searches found them in nearby Hawdon, Andrews and Poulter valleys of Arthur's Pass National Park. In an effort to save the species, captive rearing of birds began at Isaac Conservation and Wildlife Trust's Peacock Springs facility in 2003. Since 2005 over 300 captive reared birds have been translocated to 4 pest-free islands. Results have been mixed. Numbers boomed and bust. Today, of these islands, only Blumine Island has an established population. With a total number of approximately 360 birds, kākāriki karaka are the rarest of New Zealand's parakeets and one of the rarest of New Zealand's forest birds. They are classified as threatened – nationally critical.

Orange-fronted, yellow-crowned and red-crowned parakeets once co-existed. While they have similar habits, diets and breeding biology, they inhabit different niches within the forest. Yellow-crowned parakeets tend to forage in the upper canopy, orange-fronted in the mid-canopy and red-crowned low or on the ground. Red-crowned parakeets are now rare on the Mainland, but continue to do well on Stewart Island and on offshore islands.

Fortunately, kākāriki are prolific breeders. Kākāriki karaka are capable of laying several clutches each year with up to 10 eggs per clutch. They can also start breeding 3-4 months after fledging. They typically nest in tree cavities, which contributes to their vulnerability to mammalian predation. Nest preparation, incubation and brooding are done by the female. The male brings food to the female during incubation and later to the nestlings. Kākāriki karaka are monogamous. They also form loose flocks. Their diet consists of seeds, buds, flowers, honeydew, and invertebrates. During beech masts, beech seeds comprise a significant part of their diet.

The Department of Conservation first approached the Brook Waimārama Sanctuary (BWS) regarding translocating kākāriki karaka into the Sanctuary in late 2017. The current translocations are being led and

Kākāriki karaka in the Sanctuary



Photo credit: both photos by Deb Corbett



driven by the Department of Conservation (DOC) with assistance from BWS staff and volunteers. The BWS provides ideal kākāriki karaka habitat, old growth beech forest, and critically, a pest free environment. This unique combination has been recognised by DOC as an ideal opportunity to create a new sub-population aiding their kākāriki karaka recovery programme. We and DOC are optimistic these translocations will result in the establishment of a new population and help secure the future survival of this nationally critical species.

Written by Katherine Chamberlain

PEST CONTROL COLLABORATION

The Sanctuary is working with Nelson City Council and Kūmānu with a pest trapping trial outside the Sanctuary fence.

Brook Conservation Reserve – Halo Predator Trapping Project

Kūmānu staff with funding from Kaimahi for Nature and Nelson Nature, have set up a predator trapping programme within the Brook Conservation Reserve, adjacent to the boundary of the Brook Waimārama Sanctuary. The trapping project targets rats, mustelids and possums using a variety of traps. Seven traplines have been set up within areas of mature indigenous beech forest, regenerating mahoe-kānuka forest and retired forestry following existing tracks where possible.

The project falls within the Nelson Halo and contributes to the goals of the Nelson Halo to further enhance the long-term benefits of the Brook Waimārama Sanctuary. The Kaimahi for Nature funding has provided Kūmānu trainee rangers as the work force to get this project up and running and all involved have really valued the opportunity to be part of this project and learn new skills around setting up predator control networks. In the long term this project is intended to be serviced by a volunteer group and will be set up in Trap NZ for that purpose.

Project Size: 56ha

Number of traps: 200

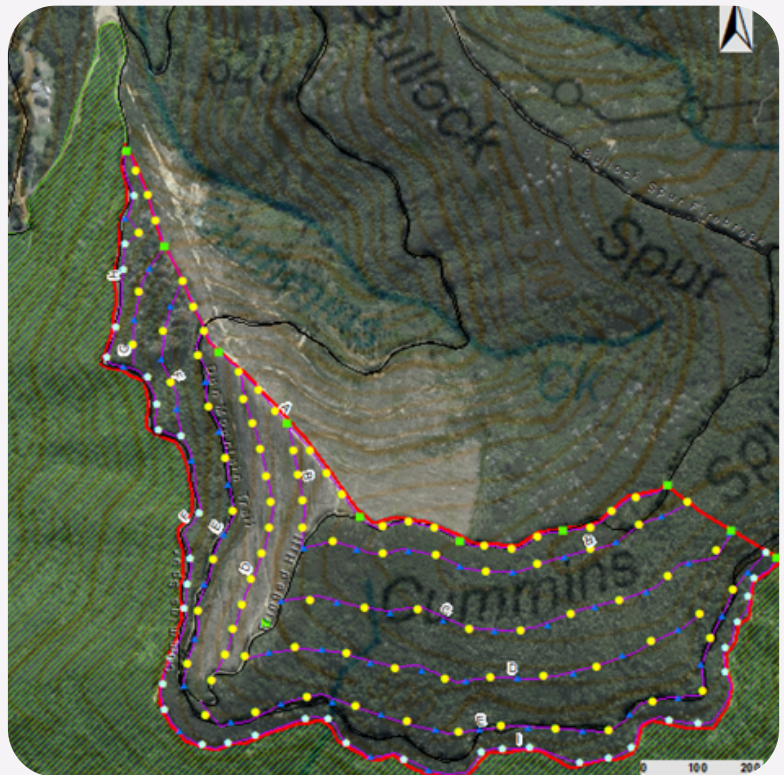
Number of lines: 7

Trap types: A24, Victor Professional, DOC200, Trapinator possum traps.

Values:

Native birds within the Nelson Halo, in particular those from the BWS that may use the Brook Reserve. Bird species recorded include kererū (NZ pigeon), tūī, korimako (bellbird), ngirungiru (tomtit), kakaruai (South Island robin) and weka.

Traps have been set and catching since the 1st of December 2021 with great success and a high catch rate so far.



Trap Check	Mice	Ship Rat	Norway Rat	Possum	Stoat	Weasel
09/12/2021 (First check)	21	9	0	17	0	0



Monitoring:

Thirty monitoring tunnels and 20 wētā hotels have been installed throughout the project area. Game cameras are also set up to capture evidence of activity and kills at some trap sites.

Significant effort has been put into pre control monitoring to establish baseline data to measure the success of our control over time. Monitoring tunnel tracking cards have been deployed monthly since September and have detected rats, mice and wētā. Going forward camera trap monitoring may be installed as an additional form of monitoring to complement tracking tunnels and Wax Tag monitoring. This may also provide data around other pest species such as ungulates which are present in the area.

FLAGSTONE BRIDGE HAS BEEN INSTALLED

We previously reported news of the Flagstone Bridge in the March and June editions of this newsletter, as well as in the June and November editions of Fantales (our Sanctuary newsletter for volunteers), so we are pleased to announce that the bridge project is complete and the bridge in place. We are now just waiting on Nelson City Council regulatory sign-off to allow us to open the bridge for use.

This bridge project allows volunteers and visitors to better access the Sanctuary interior, it provides a safer crossing of the Brook Stream at Flagstone Crossing and provides a great place from which to take a photos.

Our thanks to the following people and organisations for making this possible:

- Nelson City Council for donating the bridge
- City of Nelson Civic Trust for a donation of \$10,000
- A private donor contribution of \$2,500
- Solander Gourmet Seafood for storing the bridge (including the sections we haven't used yet) at their facilities
- Nigel Beatson, engineer of Stantec for the time he donated drawing up the plans and inspecting the bridge
- Sharland Engineering for cutting up the bridge into reusable sections
- Our stalwart volunteers in the assets team and track teams who put in many hours preparing the tracks and bridge for placement at Flagstone Crossing
- Garden City Helicopters for air lifting the bridge into place .



FURTHER COLLABORATION



Whakatū Nelson is home to many native species, some of which are classified as endangered or threatened.

Nelson City Council has a range of programmes that work to restore threatened habitat and control pests around our region, and is proud to extend this vital work as a strategic supporter of The Brook Waimārama Sanctuary.

The idea of The Brook Waimārama Sanctuary was launched in 2004, with construction of a visitor centre being completed in 2007, a 14.4km predator-proof fence installed in 2016, and a pest eradication operation undertaken in 2017. Nelson City Council has supported the Sanctuary along the way with funding of \$1,036,000 towards the fence construction, annual operational funding of \$160,000, and by leasing Council-owned land to The Brook Waimārama Sanctuary Trust for the Sanctuary.

The Brook Waimārama Sanctuary has synergies with Nelson City Council's Nelson Nature biodiversity programme and provides opportunities for collaboration, for example on the Halo project surrounding the Sanctuary.

The Nelson Halo project is a joint effort involving Council's Nelson Nature programme, Department of Conservation, community groups and private landowners to coordinate predator control and habitat restoration in an area called the 'Nelson Halo' that includes most of the areas within the Nelson Whakatū region that are outside of The Brook Waimārama Sanctuary, stretching from Wakapuaka in the north, east to the Richmond Range and south to the Tasman district border.

The goal for the Halo is to increase numbers of native birds and other wildlife in the Nelson region by creating a food abundant and pest-reduced wildlife corridor between the Sanctuary, the City, and the hinterland. As numbers of birds and other species increase within the Sanctuary, they will 'spill over' into the surrounding area, and a Halo provides areas to forage and breed safely.

In addition to funding provided by Council, Nelson City Council works with the Sanctuary through Jobs for Nature to support staff employed through Department of Conservation-funded Project Mahitahi, as well as providing in-kind resourcing.

SUPPORT FROM OUR SPONSORS

PORT NELSON

Port Nelson has made a shipping container available to the Sanctuary to address much needed storage requirements.

Port Nelson CEO Hugh Morrison says, "we are pleased that we can offer practical support like the container and proud to do our bit to support nature to flourish in Te Taihū." The container was received this week, and our sincere thanks to Port Nelson for their continued support.



Storage container being lifted into place 21 Dec. 2021..



kūmānu Environmental have affirmed their support for the Sanctuary and will again provide the Sanctuary with \$10k support of a professional arborist services. Once again, this support is sincerely appreciated.

ANOTHER TRANSLOCATION APPLICATION APPROVED

Powelliphanta hochstetteri consobrina

We're delighted to advise that last week we received notification from the Department of Conservation that our application to translocate 50 Giant Land Snails has been approved. The logistics and cultural protocols are still being worked through with Ngāti Koata and others. The snails will be gathered from the Maitai and Roding catchments to establish a self-sustaining population within the Brook Waimarama Sanctuary.

No specific plans have been drawn up yet for the collection of these snails which are currently living in a exotic pine forest on land owned by Ngāti Koata and managed by OneFortyOne, the area is due for commercial logging. The snails will be held in a holding facility for later release into the Sanctuary sometime from late autumn to the early spring months.

More about these Giant Land Snails

The number of giant land snails in the Nelson backcountry is thought to be declining due to predators and habitat disturbance but there is a lack of data to confirm their status.

Our local giant snail species *Powelliphanta hochstetteri consobrina* is only found in the Richmond and Bryant ranges behind Nelson. It is threatened by introduced predators such as possums, rats and pigs, as well as habitat disturbance by goats, deer and people. A recent snail count at the sites found low numbers, indicating that predators are taking a heavy toll on the population.

Sharp-eyed trampers may have occasionally noticed the impressive shells as they walk the tracks in these areas. Despite the full-grown shells being about 60mm across, live snails are rarely seen as they are uncommon, nocturnal and well camouflaged. If you do find empty shells on your travels, please don't take them home as they are fully protected by the Wildlife Act and are used by other snails as a source of calcium.

Giant snails are a great indicator species for the health of an ecosystem as the conditions they need to thrive (deep, moist leaf litter and very low predator pressure) are the same conditions that support a healthy forest.

Source: [Our Nelson](#), Nelson City Council April 2021
Reused with permission from NCC.



Photo credit:: Nelson City Council



OPENING HOURS

The Visitor Centre and Sanctuary will be open as follows over the next six weeks:

21-31 December:

Open daily, 9am - 5pm (closed Christmas Day)

1-9 January:

Open daily, 9am - 6pm (Wed open until 8pm)

10-31 January:

Open Tue-Sun, 9am - 6pm (Wed open until 8pm)

Closed on Mondays.

CURRENT PROJECTS

Whilst much has been achieved this year, there remains lots more to do, we're working on:

- Kaka reintroduction project. We are working on completing the kaka aviary in preparation for a possible introduction in 2022-23.
- Upper valley track improvement: we plan to create a walking track from near the top of the Sanctuary and connect it to the existing walking track network. Once completed, this will be a downhill walk of about 4.5 hours to the Visitor Centre.
- Visitor Centre enhancement project - to improve the presentation of the centre and to create more floor space for visitors and staff. The project will include making the building 'weather tight' and will cater for increased visitor numbers. The project is to help improve the building as the ticketing office and administration centre for the Sanctuary. We have secured \$100k in funding for the project, further funding is still needed, building work should commence shortly after the busy summer period. For anyone who is interested in helping support this significant project, please contact info@brooksanctuary.org.nz

GUIDED WALKS/TOURS

DAY TOUR

We are really excited to now be offering regular guided tours through the Sanctuary for anyone wanting to maximise their knowledge and/or time while visiting.

A gentle walk of 60-90 minutes, each tour will stop at several points of interest with an experienced volunteer guide explaining:

- The history of the valleys
- Stories of the bush including history and Māori use of plants
- The plants and animals all around us
- The conservation work we are doing and why it's important for all of us.

The tours depart at 10.30am from the Visitor Centre, every Sunday, and other selected days during the summer ([check our website](#) for details). We can tailor guided tours for groups around specific topics relating to the Sanctuary.

UPCOMING EVENTS

6pm, 2 Feb: Chamber Music Festival Performance

The Brook Waimārama Sanctuary is excited to host The Adam Troubadour Quartet up at the Beech Glade classroom this February as part of the 2022 Adam Chamber Music Summer Celebration festivities.

The Adam Troubadour Quartet is made up of four of NZ's most promising young string players: Grace McKenzie (violin), KiHei Lee (violin), Nathan Pinkney (viola) and Bethany Angus (cello). This will be a free event, however, pre-booking may be required in-line with any COVID19 restrictions. We will send out more information closer to the time.

21 Jan: Flagstone Bridge opening

A celebration to officially open the Flagstone Bridge, followed by a volunteer BBQ at the Sanctuary Visitor Centre

22 Feb: Fundraising Breakfast

We intend building on last year's great event. Watch for details in January and February

10 Apr: Sanctuary Open Day

Our next Open Day will include a range of excellent food vendors, entertainment and activities for all ages. We are keeping our fingers crossed that the new traffic light framework will allow us to plan our next large-scale event more confidently.

Keep an eye out on social media, our newsletters and website for any more event updates.

SANCTUARY SALES ITEMS

It's been quite some time since the Sanctuary introduced any new merchandise for visitors and supporters to purchase, so we're rather excited to announce that merchandise has gradually started to roll in the door. We're delighted to be launching BWST stainless steel drink bottles, tote-bags and hats.

A lot of consideration has been taken on sourcing our merchandise as sustainably as possible and working with suppliers that reflect our ethos.

In addition to the branded goods we also have jams (only available at the Visitor Centre), cushion covers, pillow cases and face masks available that have been made by volunteers and donated to the Sanctuary for fundraising.

Goods are available for purchase at the Sanctuary Visitor Centre, and from our website, click [here](#).



\$45.00



\$15.00



\$25.00

RAFFLE WINNERS

We recently offered two great hampers of goodies in a Christmas raffle to raise funds to purchase defibrillators for the Sanctuary. Tickets for the raffle were sold online and at the Visitor Centre. In total the raffle raised \$435 towards our goal.

Pictured below, a very excited raffle prize winner Vanessa Downing who selected the artisan goods hamper. The winner of the other hamper was Fiona Keyanonda.

Thanks to the donation by Sanctuary supporters, funds raised for the the purchase of defibrillators now stand at \$935, if you would like to donate to this project, or any other specific project at the Sanctuary, please email: info@brooksanctuary.org.nz, or alternatively, [donate via our website](#) and make mention of the specifics of your donation.



WE'RE ON TRACK TO REACH 1,000 PAID-UP SUPPORTERS

The number of fully paid-up supporters continues to climb and we are now very very close to hitting our target of 1,000 paid-up supporters by Christmas.

Growing our supporter base has been a significant achievement; over the past three years we've seen the paid supporter numbers grow from less than 150 to almost 1,000.

If you're not currently paid-up, you can sign up via the Sanctuary website, [click here](#) for more details, or email: info@brooksanctuary.org.nz



DONATIONS REBATES

If you think it's not worth the effort to claim your donations tax rebate, you're not alone. Most Kiwis find it difficult and time consuming. We've signed up with Supergenerous, they've made claiming effortless!

By signing up to Supergenerous, you can claim your donations rebates from IRD, you have the option to keep the rebate for yourself, or alternatively, you can 're-gift' the rebate to the same charitable cause to which you made the original donation. You can claim up to three years of rebates through the Supergenerous service.

Click on the image below to check out Supergenerous.



supergenerous

Donated more than \$5 in the past five years?

Every time you donate to a charity you are eligible for a 33% tax rebate, but most Kiwis never bother with the paperwork to claim this.

We've joined the Supergenerous community, which makes it easy to claim back your rebate and put your share to good use - whether that means regifting the rebate to the Brook Waimārama Sanctuary, or keeping it for yourself. It only takes two minutes, and you might be surprised by how much your rebate is.

Check it out at: www.supergenerous.co.nz

DAVE BUTLER MEMORIAL FUND FOR SPECIES REINTRODUCTIONS

Following the passing of Dr. David Butler, the founding and driving force for the establishment of the Sanctuary, the Trust established the Dave Butler Memorial Fund for Species Reintroductions.

The funds raised will be used to assist in covering translocations and reintroduction expenses not covered by other grants for these purposes.

To date, the fund has received \$3,083 in donations. The fund is still receiving donations, which can be made through [the website](#).

If you would like more information regarding donating to the Brook Waimārama Sanctuary Trust, contact: info@brooksanctuary.org.nz

All tax deductible donations are receipted, a consolidated donations statement at the end of the tax year is available for anyone who requires one.

LIFE TIME SUPPORTER SUBSCRIPTIONS

Supporters can now purchase (an individual) life time supporter subscription for \$2,000; the one-off payment helps the Sanctuary by raising funds now for current projects and expenses, rather than over many years. Life time supporters receive free entry to the Sanctuary – forever! (On days/times the Sanctuary is open to the general public). Life time supporter subscriptions are NON-TRANSFERABLE and NON-REFUNDABLE, and can be purchased via the website [here](#).



SUPPORT | DONATIONS

Thanks to a generous donation by the MACPAC Fund for Good who have recently donated \$10,000 in cash to the Sanctuary, and a further \$12,600 worth of clothing from the MACPAC Nelson store definitely be stepping out in our finest gear soon. Many of you will already have seen the smart new black soft-shell jackets with the embroidered BWST logo that were donated by NBS some time ago. (They're a bit too warm to wear at the moment!)

We would also like to thank the private individuals who made large donations to the Sanctuary this year, including one private donor who donated \$20,000 this year and has committed to further donations in 2022 & 2023. Our thanks also to the three individuals who donated \$10,000 and to the dozen or so individuals who donated over \$1,000.

We would like to acknowledge funds were received for specific projects or purposes including the purchase of additional radios, for signage, scrub-cutters, defibrillators, for the kākā aviary and Flagstone Bridge, the weasel lure project, for the purchase of assets team tools and equipment, to pay the volunteer speaker events expenses, and for the Dave Butler Memorial Fund for Species Reintroductions.

In recent days we've received a donation of \$1,061 from Nelson College students raised at their mufti days.

During the year we also received donations from the collection at several funerals.

Our thanks in particular to the small group of individuals who make regular/recurring Friends of the Brook donations, and to Jane Stevens for her endless supply of jams donated to the Sanctuary to raise funds, and to Pam Pope for her donated cushion covers etc..

Regardless of the size of donations received, they are all received with our thanks, and they are important to us to continue our journey bringing nature back to Nelson.

NEWS OF THE SANCTUARY FOUNDATION



While the Brook Waimārama Sanctuary Trust is itself a charitable trust, in 2019 the Trust decided to establish a separate charitable trust for the purposes of receiving bequests, gifts and endowments from third parties.

This week the Trust received the second instalment of funds from an anonymous bequest. These funds will be transferred to the Foundation for investment with the first tranche of funds received earlier this year; these foundation investments will be used to generate future income for the Sanctuary Trust which is the sole beneficiary of the Foundation.

If you are interested in leaving a bequest to the Sanctuary in your will, or alternatively, investing in the Foundation, pick up a copy of our new brochures.



Further information on the Foundation and bequesting to the Sanctuary, or investing in the Foundation will soon be available on the Sanctuary website.

YOU CAN HELP BY LEAVING A BEQUEST TO THE SANCTUARY

A bequest is a gift specified in your will for a loved one, charity, or group. There are various types of bequests.

Leaving a bequest to the Brook Waimārama Sanctuary will enrich the lives of future generations of New Zealanders by:

- Ensuring the continued nurturing of our present species such as pīwakawaka (fantail), tūī, miromiro (tomtit), tauhou (silvereye), ruru (morepork), and kererū (New Zealand wood pigeon), kārearea (NZ Falcon), titipounamu (rifleman), pīpipi (brown creeper) and toutouwai (South Island robin).
- Assisting with our reintroduction plan developed with iwi and DOC to bring back species such as kiwi, kākārīki, kākā, powelliphanta (giant snail) and tuatara. Our first reintroduction, of tīeke (saddleback), was undertaken in April 2021, bringing this rare ground dwelling bird back to the mainland of the South Island New Zealand for the first time for nearly 100 years.
- Providing for the ongoing development of a world-class visitor attraction, native wildlife and conservation education, and ongoing scientific research to the benefit of future generations.

TOWN OFFICE MOVES

The Sanctuary's town office has recently moved, while still at Morrison Square, we're now in much larger premises next to the Aki Sushi shop.

The new premises are significantly larger and include an upstairs meeting/education room, larger downstairs space with room to display merchandise, hold events.

Steffi our multi-talented Biosecurity Ranger has been decorating one of the walls with a large mural. Steffi's handiwork is already looking pretty amazing and it's not even finished yet!

Call in and check out our new 'home' in town!

NEW SPONSOR

JENS HANSEN

SINCE ✱ 1960

GOING GOLD FOR KIWI

It's around 100 years since kiwi were last seen or heard in the hills around Nelson City, but a collaboration between Nelson jeweller Jens Hansen and the Brook Waimārama Sanctuary Trust means it may not be that long before they return.

The sponsorship from Jens Hansen will see a percentage of proceeds from the iconic Golden Kiwi jewellery line going into the Jens Hansen Kiwi Establishment Fund to support the re-introduction of kiwi into the fenced sanctuary.

The Jens Hansen Golden Kiwi pendant was created in 2015 as a tribute to New Zealanders' affection for their national bird. The first pendant made was given as a gift from Nelson City to the Duchess of Cornwall when she visited Nelson with the Prince of Wales in November that year.

Halfdan Hansen said the fund was created when he was looking for a regional conservation project to support, kiwi.

"We approached the Sanctuary and found out they were keen to introduce kiwi here, so we started to talk about how we could help. We love our Golden Kiwi pendant and the Silver Kiwi ring and could feel a natural connection between these pieces of jewellery and the vision of the Sanctuary to introduce kiwi to Nelson." Jens Hansen is a significant exporter of Nelson jewellery, with pieces worn by people from all over the world.

"The Golden Kiwi pendant is one of our most popular pieces – it symbolises everything people love about New Zealand and our beautiful native birds," says Halfdan. "That was why we felt it was the perfect gift for the Duchess of Cornwall, to mark her visit here in 2015. Given her and Prince Charles' interest in conservation, we have written to her to let her know about the collaboration with the Sanctuary.

Ru Collin, Chief Executive of the Brook Waimārama Sanctuary, says that the Jens Hansen Kiwi Establishment Fund will enable some base funding to build up, as bringing kiwi to Nelson will take a few years to come to fruition.

"It could be three to four years before we can bring kiwi into the Sanctuary," says Ru. "We will consult with iwi and wait for birds to become available through the Department of Conservation. Having a project establishment fund will enable us to prepare for their introduction."

In preparation, the Sanctuary Trust is working on ensuring the native habitat within the Sanctuary fence is ideal for kiwi to thrive.

"We could easily support 100 pairs here eventually," says Ru. "The Sanctuary is in great shape and its ecosystem is steadily regenerating."

The Sanctuary is now free of grazing pests like goats, deer, possums and pigs, all of which were damaging the bush and preventing regeneration, and the removal of predatory pests like rats and stoats means that native birds can breed in safety within the Sanctuary's fenced area.

"The work that the Sanctuary is doing to bring nature back to Nelson is so important," says Halfdan. "Many of our kiwi pendants wing their way overseas, often to Kiwis living in the far-flung corners of the world where they treasure something that reminds them of home. So, it's extra special to us that we can use this fund to help bring the amazing birds back to their own native home here in Nelson."

Halfdan says he encourages other businesses to contribute to the fund, so that the Sanctuary is ready when the kiwi is ready to come.



BROOK BUSINESS CLUB

In 2018 the Trust launched the Brook Business Club to develop/strengthen our ties to many of the businesses in the Nelson/Tasman region, and to develop new income to support the activities of the Sanctuary. We asked businesses to commit to a three-year programme at a cost of \$500+GST per annum. The programme has seen 60+ businesses joining, and while we've lost a few this year due to COVID-19, we're delighted with the number of businesses who have recently fulfilled their third-year commitment. We are continuing to evolve the programme to make it more attractive and meaningful to businesses supporters, and would welcome your feedback; and of course we're always keen to sign-up new business club supporters. [Click for more details](#), or contact: deborah.mcconochie@brooksanctuary.org.nz

SPONSOR PROFILE

OYSTER®

Oyster Management manages the Morrison Square retail complex where the Sanctuary's town office is located. Oyster provides the Sanctuary town office rent-free; all we pay for is our electricity and internet charges. Oyster launched in 2006, and combined with Prime Retail in 2010, forming what we know as Oyster today. Oyster was formed with the vision of providing a full range of professional services for its retail, office and industrial property owners and investors. Since then, Oyster's offerings have grown to provide both funds and property management, with assets under management expanding from NZ\$500 million to an excess of NZ\$2.0 billion. Our sincere thanks to Oyster for their generous support by way of rent-free premises - it is most sincerely appreciated.

We recently moved to a new site within the Morrison square. Our intention with this new space is to create several features to benefit the Sanctuary operation:

- A good meeting room and breakout spaces
- An education area under development
- An events venue for volunteers
- An information centre for the city

Staff, volunteers and visitors are encouraged to drop in and use the space.

BUSINESS CLUB SUPPORTER PROFILE



Stallard Law Limited is a law firm that is based in Nelson, New Zealand. The firm was established in 2008.

Stallard Law's areas of expertise include: property law; business and company law; fisheries and maritime law; personal law; and immigration and overseas investment law.

The firm is led by its directors Tony Stallard and Jeremy Barton, and they are supported by an experienced team of legal staff.



Sunrise Cleaning Services Ltd has become one of Nelson's iconic businesses.

Started in 1986 as the proverbial one man band (indeed an after work part time contract at one site). Sunrise Cleaning Services is now one of the regions largest employers with a staff of nearly 150.

A feature of the company in the longevity of the relationships it has built with key clients. Many of Sunrise's clients have been with the company for 20 to 30 years and more and include many of the regions largest and best know businesses.

Owner Bruce Farley is an advocate of supporting our local community in all ways and Sunrise contributes a significant amount to local organisations and charities every year.

We love the Brook Sanctuary and are very happy to be a business club member.

EDUCATION RESOURCES AND ACTIVITIES

Shani Bennett our new education support coordinator has helped produce two useful resources. The BWST education flier brochure and the 'Nature Passports'

The flier has been sent to Tasman and Nelson-based schools, who we hope will consider adding the Sanctuary into their science, and outdoors curriculum from 2022.

For any interested groups that would like to come to the Sanctuary, contact: info@brooksanctuary.org.nz and/or look on our website for more details, [click here](#). Note: we will be adding more content to this section of the website soon.

We will be rolling out the 'Nature Passport' over the summer holiday period. The package will contain a number of activities and tasks for primary and secondary school children to complete at home, out in nature and within the Sanctuary. As tasks are completed, children will receive stamps in their nature 'Nature Passport', special badges, and the opportunity to become a Sanctuary Nature Ambassador.

Our thanks to Jane Reed at [SeeReed Visual Communication](#) for her graphic design skills and support.



Shani Bennett
Education Support
educationsupport@brooksanctuary.org.nz

<p>Contact us</p> <p>If you can't find what you are looking for or would like to discuss specific requirements, please contact us.</p> <p>To make a booking or enquire about a visit for your school, organisation or group, please complete the enquiry form found on our website:</p> <p>https://www.brooksanctuary.org.nz/education-enquiry-the-next-generation</p> <p>Or email us directly: educationsupport@brooksanctuary.org.nz</p> <p>Or call us directly: 03 945 3422</p> <p>If you would like to join our conservation journey, please follow us on:</p> <p>@brooksanctuary @brooksanctuary</p>	<p>Primary and Secondary Groups (continued)</p>	<p>Clear Waters</p> <p>What's under the surface?</p> <p>In this session, Kianga will investigate what is under the surface by collecting and observing the aquatic insects and the macroinvertebrates living in the stream.</p> <p>Benthic macroinvertebrates are important indicators of stream health as they play a central role in stream ecosystems.</p> <p>Healthy waters?</p> <p>In conjunction with Tasman Bay Guardians through the Whānau Connection Programme, Kianga will learn about conserving our precious streams and rivers. From in-class learning, citizen science, to a Māori perspective and restoration programmes, they will learn about the importance of water quality, ecological systems and scientific approaches to measuring this.</p>	<p>Native, Endemic and Introduced Species</p> <p>Kianga will learn about the rich and unique biodiversity of Aotearoa's native and endemic species at the Brook Waimārama Sanctuary. They can become scientists in the field as they explore and document the unique species that they observe.</p> <p>Pests and Predators</p> <p>In this session Kianga will learn about the negative impact pests and predators have on native and endemic bird and plant species. Kianga will discover how our fully fenced urban sanctuary has contributed to regeneration of the ngahere.</p> <p>In exploring the Sanctuary, Kianga will witness the many ways we keep it pest-free. They will learn about the strategies and methods used by people to manage introduced pests.</p>	<p>Tertiary Groups</p> <p>We can facilitate education sessions for tertiary groups and students.</p>	<p>Teaching and Empowering</p>
	<p>All that's Green</p> <p>Kianga will learn about the many native tree and plant species that can be found at the Brook Waimārama Sanctuary. They can become scientists in the field as they explore and document the unique species that they observe.</p> <p>Kianga will also learn about rongoā Māori, and the medicinal uses Māori have for different plants.</p>			<p>Interest Groups</p> <p>We can facilitate education sessions for special interest groups such as Scouts, Cubs and Guides, and retirement homes.</p> <p>Nature Passport</p> <p>We have introduced a new Nature Passport programme at the Sanctuary. Kianga can collect stamps and rewards, and become a Sanctuary Nature Ambassador by completing fun and educational tasks.</p>	

<p>The Brook Waimārama Sanctuary is the largest fenced haven for endangered native plants and animals in the South Island. The protected hidden valleys of Waimārama offer Kianga learners the chance to learn about the unique biodiversity of Te Tāhuhu the top of the South Island in a living laboratory.</p> <p>At the Sanctuary we are passionate about education, providing the opportunity for people of all ages to have an immersive, hands-on, and sensor-engaging learning experience.</p> <p>Our mission is to facilitate genuine connections with nature and to prepare the next generation with the skills and knowledge they need to continue our legacy of conservation.</p>	<p>Facilitated Education Sessions</p> <p>We strive to provide exciting and inspiring nature-based learning experiences for people of all ages. The facilitated education sessions at The Brook Waimārama Sanctuary:</p> <ul style="list-style-type: none"> Support the New Zealand Curriculum, Te Marautanga o Aotearoa or Te Whānau Facilitate a place-based or localized curriculum Strive to provide a positive environmental experience for Kianga and Kaiako teachers Are led by enthusiastic and experienced educators Offer a fully equipped Beech Glade outdoor classroom Promote learning by doing! 		<p>We can bring the Sanctuary to you!</p> <p>A Sanctuary educator can visit your school or organisation and provide tailor-made sessions to suit your area of study or interest.</p> <p>This can include:</p> <ul style="list-style-type: none"> A pre-Sanctuary visit to your school or organisation A facilitated Sanctuary visit A post-Sanctuary visit to your school or organisation 	<p>Facilitated Education Sessions we offer:</p> <p>Early Childhood Groups</p> <p>Connecting With Nature</p> <p>Tamariki can explore and discover all the wonderful sights, sounds and smells in the Sanctuary. In this session you will be accompanied by a Sanctuary educator who will support the learning of ECE tamariki through storytelling, interactive activities and exploration of the Sanctuary's ngahere forests. Tamariki will also discover the important role of insects and reptiles in the environment and have the chance to see some insects up close.</p>	<p>Primary and Secondary Groups</p> <p>Kaitiakitanga</p> <p>Kianga will learn about the importance of conservation and being kaitiaki guardians of the natural world as they explore and discover all the wonderful sights, sounds and smells in the Sanctuary.</p> <p>Creepies & Crawlies</p> <p>In this facilitated session, Kianga will experience and learn about the many insects and reptiles that can be found at the Sanctuary. Through stories and interactive activities, Kianga will learn about the critical role of insects in the environment. Our Creepies & Crawlies kits will be available for Kianga to use in their investigations.</p>
	<p>Why come to the Brook Waimārama Sanctuary?</p> <ul style="list-style-type: none"> To make connections with whenua (land) and tūrangawaewae (standing places) To learn about history - natural, Māori and European To learn about science of the living world, Mātauranga Māori (Māori knowledge) and the chance to become citizen scientists To learn about conservation and the importance of being kaitiaki guardians of the natural world 				

EDUCATION RESOURCES DEVELOPED

Featured below, hand drawn sketch of the Sanctuary by Steffi Künstle, that is included in the new Sanctuary 'passports' for kids developed by Shani Bennett.

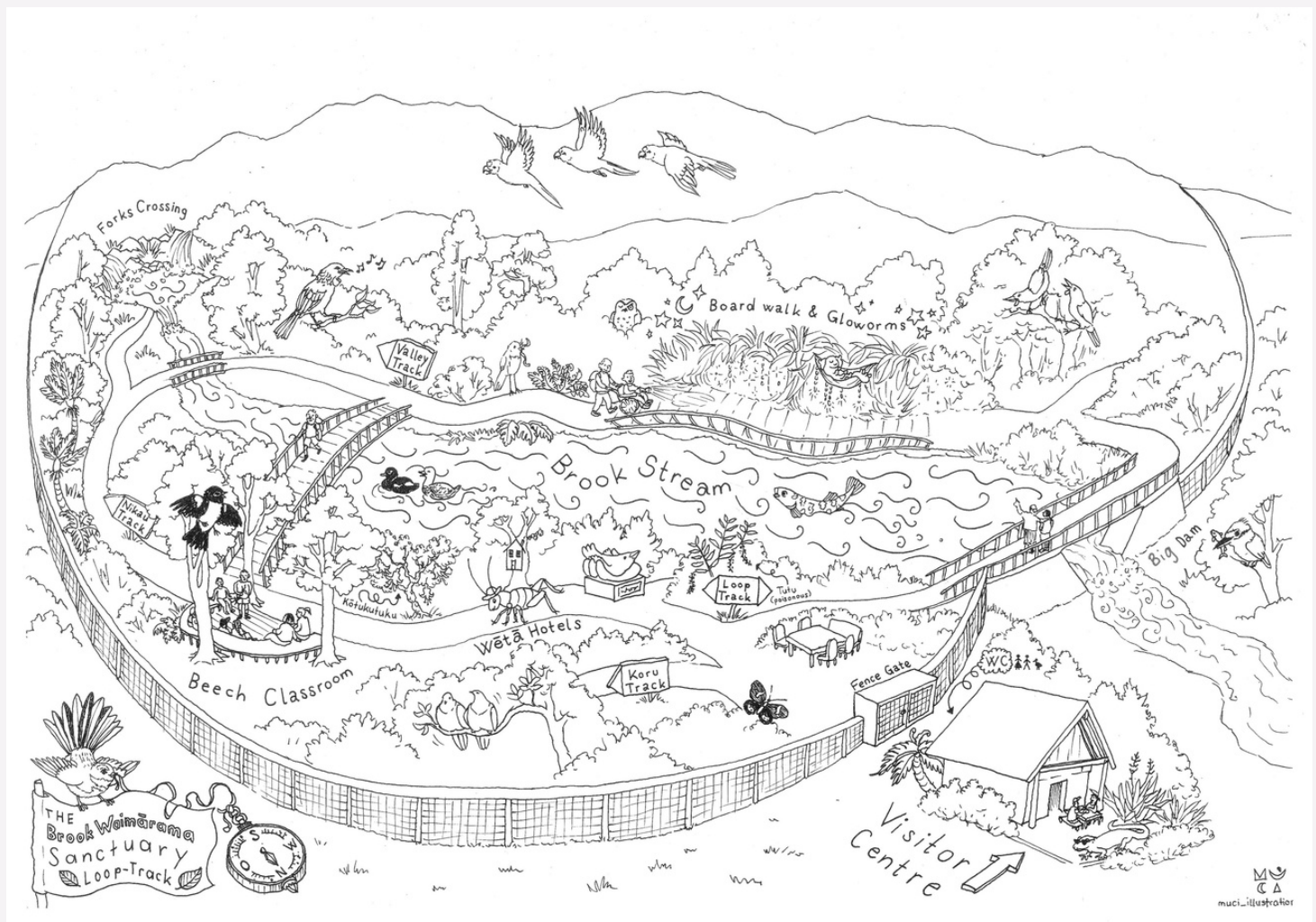
Shani is also involved in developing Sanctuary staff and volunteer induction videos - these are still in the editing stage at present. She is also preparing for school tours by developing a suitable script to be ready from term 1, February 2022 as well as developing her knowledge of flora, fauna, wildlife in the sanctuary.

Shani and Rick Field, our educator and tours' hosts, are working on sourcing education resources for the Beech Glade classroom and on utilising part of the new Morrison Square office space for education delivery to interest groups.

To enquire about arranging an education group visit to the Sanctuary, visit our website and complete the enquiry form: Education inspiring the next generation - conservation in action (brooksanctuary.org.nz)



The kids' passport and task workbooks developed by Shani.



Thanks to Steffi our multi-talented biosecurity ranger for her amazing drawing skills!
www.mucidesign.com or Instagram [muci_illustration](https://www.instagram.com/muci_illustration)

FUNGI GALORE!

Avid fungi photographer Rebecca Bowater has been up in the Sanctuary recently and noted that she's never seen so many fungi in the Sanctuary in December, all that rain has been good for fungi development. Many of the fungi are new to Rebecca and aren't yet formally identified.



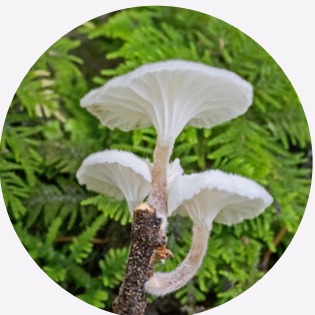
Slime mold
Lycogala epidendron
Photo by Rebecca Bowater



Coral fungus
Marasmiellus candidus
Photo by Rebecca Bowater



Hydrosus sp.
Photo by Rebecca Bowater



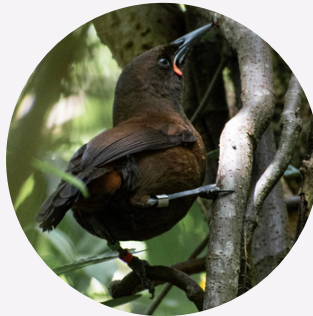
Unidentified fungi
Photo by Rebecca Bowater

Rebecca is the author of New Zealand FUNGI, quite a few of the fungi featured were photographed at the Sanctuary. If you'd like your own copy (\$45), contact Rebecca 03 545 1260.

RECENTLY SEEN IN THE SANCTUARY



Kereru | New Zealand pigeon
Hemiphaga novaeseelandiae
Photo by Rebecca Bowater



Tieke | South Island saddleback
Philesturnus carunculatus carunculatus
A juvenile tieke seen in the Sanctuary 20 November.
Photo by Matt Hazeldine

Corey Scott - coffee brewer, toastie maker extraordinaire!



Visitors often ask if we sell coffee or if we would open a café at the Sanctuary. We don't run a café BUT we have now made a deal with Corey Scott who runs the CHEESY DEANS coffee cart offering toasted sandwiches too!

Have you spotted him at the Sanctuary? (Weekends only.)

MERI KIRIHIMETI HAPPY HOLIDAYS!

Thanks for your
support throughout
this action-packed
year! Wishing you a
wonderful holiday.

Ngā mihi nui

The Brook Waimārama
Sanctuary team



NEWSLETTER SURVEY

We've created a short online survey to get reader feedback on eNews. We welcome your thoughts/input.

You can find the survey [here](#)

WANT TO UNSUBSCRIBE?

If you no longer wish to receive eNews, please send an email to info@brooksanctuary.org.nz with "UNSUBSCRIBE eNews" in the subject line.