



SEPTEMBER 2022 IN THIS ISSUE

PAGE 2

Powelliphanta translocation update
AGM Notice - election of Trustees

PAGE 3

Nelson City Mayoral Candidate Forum

PAGE 4

Visitor Centre enhancement update
Sanctuaries of NZ conference in Nelson

PAGE 5

Storm repairs appeal - thank you
Storm recovery update and special thanks
Nelson NBus features Sanctuary signage
Bequest received
Sanctuary calendars - coming soon

PAGE 6

Changes at the Visitor Centre
COVID19 - policy update
Trustee and staff profiles
Great Christmas gift ideas

PAGE 7

Sanctuary-inspired shoes from John Jepson
Donated manuka honey for sale
Volunteers wanted
Sanctuary October opening hours
Recruiting for (paid) tour guides

PAGE 8

Region's teachers visit the Sanctuary

PAGE 9

Recently seen in the Sanctuary

PAGE 10

Jens Hansen sponsor profile

PAGE 11

Business Club profiles
Supporter numbers continue to grow

PAGE 12

Endemic species profile -
Pekepekekiore - icicle fungus

KEEPING YOU INFORMED

MESSAGE FROM OUR CHAIR

Later this year, our local government representatives are up for election or re-election, and next year we have a general election. I encourage you to talk to your elected representatives, and those seeking election about the role of fenced sanctuaries as part of the nation's collective conservation efforts, and of the precarious and variable local/central government funding for such efforts.

Protected sanctuaries, by their very nature, demand money, time and dedication - lots and lots of all three! Money to pay for biosecurity fencing, constant repairs to the fence, tracks, water courses and weed control are just a very small part of the ongoing costs of sanctuary operations; added to which there are vehicle costs, insurance, power charges, payroll costs, tools and equipment and much more besides.

While it is a commercial objective of the Trustees for the Sanctuary to become financially independent (fully self-funding), in reality, it may take another six to eight years to increase visitor and supporter numbers to the point that sufficient income is generated to cover all our costs.

Sanctuaries such as the Brook Waimārama Sanctuary need government support (both central and local) until they become independently financially secure. Increasingly, conservation investments are linked to the tourism sector, so investing in sanctuaries means investment in the visitor sector.

The Sanctuary is a prime example of a local community asset attracting visitors year round, that with greater investment from local and central government, business and community support could be transformed into a "must-see" top quality visitor attraction in the top of the South Island.

It is my sincere belief, which I imagine is shared by all of our volunteers, that the Sanctuary has the potential to become an iconic conservation and tourism operation for our region in the same way that the much better known Zealandia has become in Wellington.

An opportunity exists to continue to build, improve and utilise the Sanctuary as an existing community tourism and conservation asset that will over time return substantial benefit to both the biodiversity of the region and as a tourism asset for the region attracting greater numbers of local visitors and out-of-region tourists.

However, we could always do more if more funding was available. So if you're talking to election candidates, you might like to ask them where they stand on supporting their local conservation and tourism asset the Brook Waimārama Sanctuary!

Ngā mihi
Chris Hawkes, Chair BWST

SPECIES TRANSLOCATION UPDATE - POWELLIPHANTA

On 7 September the Sanctuary's powelliphanta translocation team found a further nine snails for the third and final permitted source site in the Rocks Hut / Coppermine Saddle vicinity. The nine snails have been released into the Sanctuary at the same location the original 30 snails were released in June.

ANOTHER FUNDRAISING BEER AT THE FREEHOUSE

To celebrate the release of the powelliphanta into the Sanctuary our friends at The Free House launched a second special release beer - the Powelliphanta Porter. Release notes described the beer as brewed with wood-ear mushrooms and miso, adding an umami dimension to the chocolatey roasted malts.

A portion of the sales of this beer will be donated to the Sanctuary, however, the Powelliphanta Porter was such a huge success that sadly there's none left.



AGM NOTICE | REMINDER - ELECTION OF TRUSTEES

The Brook Waimarama Sanctuary Trust Annual General Meeting will be held Thursday 27 October 2022.

Trustee elections are undertaken each year and confirmed at the annual general meeting (AGM). BWST trustees are elected on three-year terms and can be put forward for consideration or offer themselves for re-election.

The Sanctuary Trust Deed process require elections be undertaken observing the following:

- An AGM held within four months of old financial year (ie by 31 October) each year. Notice of an AGM must be made at least 14 days before date, this year by 13 October.
- Financial (paid-up and life time) members (generally referred to as 'supporters') are able to put candidates forward for a vote at AGM. Candidates must be nominated and seconded by paid-up members (supporters). Candidate nominations should be sent to the The Trust Chair, PO Box 744, Nelson 7040.
- **The deadline to put candidates forward for election is 12 October 2022.**
- Candidate criteria include demonstrating a commitment to the purpose of the trust, and experience with environmental projects, education, Human Resources, business or tourism.

- At the AGM only paid-up supporters can vote for trustees. Note, that life supporters and subscribers are eligible to vote.
- For 2022, five current trustees are due for rotation. Chris Hawkes, Mike Elson Brown, Mike Glover, Debbie Armatage and Christine Hemi (iwi rep) have all confirmed their intentions to re-stand and are available for re-election as trustees.
- If there are no further candidates nominated for election by 13 October 2022, the five incumbents will be confirmed at the AGM as trustees for a further three-year term through to 2025. An election will be held if additional nominations are received.

Supporters, volunteers, and Sanctuary business supporters are welcome to attend the AGM. Our new Patron Lou Sanson will be the keynote speaker and we will offer a Zoom link again with an improved online service this year.

The AGM will be held in the Sanctuary town office in Morrison Square, attendance will be capped at 60 people. The event will be offered online, look out for an AGM invitation via email due out 13 October.

MAYORAL CANDIDATE FORUM

On Tuesday 20 September six Nelson City mayoral candidates (Matt Lawrey, Kerry Neal, Rohan O'Neill-Stevens, Richard Osmaston, Tim Skinner and Nick Smith) gathered at a public forum at The Granary, Founders Park to set out where they stand on a variety of environment issues. The event was put together by Forest & Bird, the Brook Waimarama Sanctuary, the Nelson Tasman Climate Forum and the Nelson Environment Centre, and attended by approx. 200 members of the Nelson community. Ru Collin and Chris Hawkes from the Sanctuary attended along with at least 20 Sanctuary volunteers.

A panel of environmental experts - Debs Martin - Programme Manager for The Nature Conservancy, Aneika Young (Kaiāwhina Māori (Māori Cultural Advisor)/Environmental Scientist at Cawthron Institute, Nate Wilbourne Garin College student and Forest and Bird Youth Hub Coordinator, and David Ayre from the Nelson Tasman Climate Action Forum, and the evening was MC'd by Anton Drazevic (Chief Executive of the Nelson Environment Centre).

Seventeen questions were put to the panel covering the following topics:

- Diversifying and supporting those around the (NCC) table
- Future proofing for weather events
- Cats and control measures
- Sedimentation in the Tasman Bay - mitigation and minimising
- NCC and TDC amalgamation and environment benefits
- The Nelson library development
- Public transport
- Community input
- Ecosystems resilience for Nelson
- Transport and lowering emissions
- Supporting Youth Climate Action
- Sewage and Council Infrastructure
- Housing and Intensification
- NCC role to leading climate change
- Three waters
- The Nelson Plan
- Top 3 Priorities to address the Climate Crisis



Three candidates, Matt Lawrey, Rohan O'Neill-Stevens and Nick Smith, stated their clear support for the Sanctuary.

The entire event was filmed and can be viewed (1 hr 46 mins) on the Nelson Environment Centre YouTube channel, [click here to view](#).

Voting for local body elections close 8 October.

VISITOR CENTRE ENHANCEMENT UPDATE

The Visitor Centre enhancement project got underway in earnest in June; stage one (of three stages) included the creation of a brand new volunteers break room with access from side and back of the building, and the creation of new office space for the operations, biosecurity and noxious weeds Sanctuary staff.

Work included weather-proofing the building by improving its insulation and making it a more comfortable working environment.

The office space and the break room are now largely completed and staff have moved into the new office space after a month in temporary accommodations in the Brook Holiday Camp.

The focus of work has now switched to enhancing the ticketing office area and the feature hall - the southern end will be enclosed, the roof will be lined, and solar panels will go on the roof.

We also plan to upgrade the front entrance, changing the way visitors approach the Visitor Centre. These changes are intended to cater for increasing visitor numbers and to present visitors with a Sanctuary rich in wildlife.

FUNDING IS STILL NEEDED FOR THIS PROJECT

While we have already received generous support for the Visitor Centre upgrade project from Simplicity Trust, Platinum Asset Management in Australia, and several private donors, we are still seeking additional financial support towards this important project.

For anyone who wants to help, please contact: info@brooksanctuary.org.nz.

SANCTUARIES OF NEW ZEALAND CONFERENCE

The Brook Waimārama Sanctuary co-hosted the national Sanctuaries of New Zealand (SONZI) workshop 16-17 August. It was a great success with over 100 people attending the Science Day on day one, despite the challenging conditions caused by the severe rainfall event and a State of Emergency being declared halfway through the workshop.

Unfortunately, this meant that the planned field trip to the BWS had to be cancelled. This is very regrettable since many conference delegates were very keen to visit our unique Sanctuary.

It's back again!
1 September – 14 October 2022

Win this car



Open a Target savings Account and you could win this stunning MG HS +EV Excite!

All existing Target Saver Account holders are included in the draw. Every \$100 in your account is one chance to win. Please read the full, updated terms and conditions on our website.

nbs.co.nz
0800 101 700

NBS | 160
Banking for life

Colour of prize car may vary from this image. NBS is not a registered bank. NBS General Terms and Conditions apply. NBS current Product Disclosure Statement is available. Fee of charge at any NBS Branch. Fees may apply. NBS is the issuer of the car details.

Brook Business Club supporter (and the Sanctuary's bank) NBS is currently running another Win a Car promotion for anyone who holds \$100 or more in an NBS Target Saver account.

- The promotion runs from 1st September – 14th October
- Simply open a Target saver account and deposit \$100 and you're in the draw to win
- All existing Target Saver account holders are included in the draw
- Every \$100 in your account equals one chance to win
- Visit nbs.co.nz for full terms and conditions

Clubs and societies also qualify for this promotion. Could it be your organisation winning the brand-new MG HS +EV Excite?!

If you would like more information on how to open a Target Saver account either for yourself or your club/society, please contact your local branch

STORM REPAIRS - FUNDS APPEAL - THANK YOU!

Following the extreme weather event last month that brought us the 'atmospheric river of rain' we put out an appeal 26 August for donations to help pay the clean-up/repair bills - so now **a huge thank you** to the many people who generously responded.

Our first donation was received within 9 minutes of putting out the appeal, donations came flooding in (no pun intended) from as far afield as Manhattan, New York, to Kaiapoi, Wellington, Lake Ferry and Auckland.

As of late-September, a little over \$31,000 has been received with donations ranging from \$20 to \$10,000 - we are extremely grateful for every dollar donated. We've also been offered approx. \$12,000 worth of fence posts.

It's too soon to say what the total repair bill will add up to, so far we've received clean-up/repair bills for about \$20k, further expenses/bills will come in later from repairs that have yet to commence.

We're still accepting donations for our clean-up, if you'd like to donate, [click here](#) and use the specific purpose donation phrase 'storm clean-up'.

ON THE MOVE - LOOK OUT FOR THE SANCTUARY

Look out for the Sanctuary featured on the side of two of the Nelson Coachlines NBUS - they feature our kākāriki karaka and tīeke .

Our thanks to Nelson City Council and Nelson Coachlines for agreeing to/approving this signage, and thanks also to Cutting Edge signs for the graphics/signwriting work.

Our sincere thanks also to Sanctuary supporters Irene and Perry Turner for their generous donation making this initiative possible.



BEQUEST RECEIVED

We would acknowledge a generous bequest left to the Sanctuary by Douglas E Price who passed away in December 2021 aged 93. Doug was a supporter of the Sanctuary, and his bequest was received by the Brook Waimārama Sanctuary Trust on 6 September 2022.

STORM RECOVERY UPDATE

The storm from 17-21 August affected the Sanctuary operations with many slips and slumps requiring repairs and maintenance. The pest-fence held although precautionary response grids were implemented at two sites.

We would like to acknowledge the volunteers and staff efforts in coordinating and helping maintain the pest-fence integrity, for reopening many of the walking tracks and for their efforts at keeping us bio-secure.

As well as the cash donations received from our appeal, we also received generous assistance from Thawley Orchards with fenceposts valued at ~\$12,000 donated to the Sanctuary.

We'd also like to mention that we were lucky to secure the contracting services (two diggers and a bobcat) from Mikes Earthworks and Drainage to help regain access around the Sanctuary perimeter. This support will go along way to help restore the Sanctuary from a significant weather event.

SPECIAL THANKS TO BONNIE ASHBY (AGED 6)

Bonnie recently had a birthday party - she asked all her friends to bring \$5 for the Brook Sanctuary storm repairs - Bonnie and her friends raised \$127.10 for the storm repairs - amazing fundraising effort.

COMING SOON... SANCTUARY CALENDARS

We'll let you know when these become available.



CHANGES AT THE VISITOR CENTRE

Kirsten Roedsgaard, our Visitor Centre and Volunteer Coordinator, has resigned and will leave her role at the Sanctuary by the end of October 2022.

Kirsten has been in this role since December 2020 and says, *My nearly two years at the Sanctuary have been amazing on so many levels and there are many people and aspects of the role that I will miss, including producing the BWS radio show, Voices from the Brook, and guiding glow worm tours. I am truly grateful for the opportunity I was given when New Zealand's borders were closed, but now that the country has opened up again I am resuming my old roles as travel writer and international tour guide taking visitors around Aotearoa and overseas. Thank you and all the best for the future of Nelson's amazing eco-haven!*

Kirsten's last day at the Visitor Centre welcoming visitors is 30 October 2022. We wish Kirsten best wishes on her future and thank her for her commitment over the last two years.



We would like to acknowledge that the funding that made Kirsten's paid position possible was from the government's Project Mahitahi: Kaimahi for Nature COVID response initiative that created/funded new jobs/projects in the conservation sector.

We have now secured additional (non-government) funding that means we can continue this position, and we're currently recruiting for a replacement. By the time this newsletter goes out, we'll be evaluating applications and interviewing.

COVID19 UPDATE FOR SANCTUARY VISITORS

Effective from 13 September 2022 the BWST COVID19 policy has been revised in light of the changes to the COVID Protection Framework announced by the government 12 September and the discontinuation of the COVID19 'traffic light' system.

The Sanctuary policy is updated to feature:

- The Intentions sheets is required to be completed as part of the entry conditions into the Sanctuary
- Wearing a mask in the Visitor Centre and BWST vehicles is now voluntary as opposed to 'required'
- If people (visitors, staff and volunteers) are feeling unwell - please stay at home

TRUSTEE & STAFF PROFILE

In recent editions of our FanTales newsletter which goes out to our volunteers, we've been profiling a Trustee and a member of staff in each issue. We thought we'd start doing the same in eNews, so now we introduce...

TRUSTEE PROFILE MIKE GLOVER

Mike Glover is a professional director with considerable experience in corporate governance. Mike has an honours degree in law and is a Chartered Fellow of the Institute of Directors and became a Sanctuary Trustee in 2019.



STAFF PROFILE RU COLLIN

Ru Collin is our Chief Executive. Ru was a Trustee of the Sanctuary for two years before stepping down to take on the CE role in mid-2019. [Click here](#) for a short video of Ru discussing his work at the Sanctuary.



SOME GREAT CHRISTMAS GIFT IDEAS

Wondering what to give the grandchildren, friends, work colleagues or employees for Christmas? We've got some great suggestions!

- Give the gift of a Brook Waimārama Sanctuary supporter subscription - supporters receive our quarterly newsletters and free entry to the Sanctuary - we can provide customised vouchers - contact: info@brooksanctuary.org.nz
- A great alternative to a subscription is a one-time pre-paid entry voucher to introduce people to the Sanctuary
- We have a variety of Sanctuary gift items available - drink bottles, bucket hats, tote bags, kakariki t-shirts, caps available through the website

SUPPORT JOHN JEPSON

John Jepson, is a local artist based in Motueka. John's supporting the Sanctuary through a special collection of shoe designs inspired by the wildlife found in the Sanctuary. John will donate \$10 to the Sanctuary from each pair of shoes sold.

View John's website, and the design range, [click here](#)



DONATED MĀNUKA HONEY FOR SALE

FSL (a Brook Sanctuary Business Club member) has recently donated (300g) jars of mānuka honey to the Sanctuary. The honey is available (\$20) in our town office in Morrison Square (next to the Aki Sushi shop) and we'll have supplies at the Visitor Centre in due course - when the building work is finished.



The honey is local, sourced from Mountain Valley Honey in Motueka.

WANTED WANTED WANTED VOLUNTEERS

The Sanctuary is very keen to hear from anyone interested, or even just plain curious, about volunteering in the Sanctuary!

Join the Brook Waimārama Sanctuary volunteer community and be part of conservation in action! We currently have a variety of volunteer roles available including track cutting and maintenance, wildlife monitoring, fence line monitoring, weed control, events and fundraising, visitor centre hosts, tour guiding and more!

View our new volunteers team page on the website to learn more about the various volunteer teams (we have two more teams yet to be profiled - our Visitor Centre Hosts team and our events team).

Click >>>here<<<

Register your interest in becoming a Sanctuary volunteer by completing the following volunteer sign-up form.

Click >>>here<<<

Contact Sabrina, Volunteer Connector at: volunteerconnector@brooksanctuary.org.nz

SANCTUARY OPENING HOURS IN OCTOBER

School holidays (1-16 Oct), we will be open as follows:
Tue-Sun 9am - 4pm (closed on Mondays)

24 October - Labour Day

Open 9am - 4pm

17-31 October the Sanctuary will be open as follows:

Fri-Sun 9am - 4pm

NOW RECRUITING

The Brook Waimārama Sanctuary invites applications for paid Sanctuary tour guides. These are new (casual) employee positions.

- Casual work
- Hours will be variable/seasonal and will involve weekend/evening work
- Guides will work closely with Sanctuary staff to manage tour bookings
- Successful applicants will be expected to:
 1. follow a guide/tour script
 2. understand and have an affinity for the Sanctuary's purpose of restoring an eco-system.

Past experience with hosting groups is an advantage but not essential as training will be provided.

Confidential applications should be sent to:
info@brooksanctuary.org.nz

REGION'S TEACHERS VISIT THE SANCTUARY

This month Enviroschools Whakatū hosted a Teacher's Professional Development Day at the Sanctuary. The day was a great success, with over two dozen early childhood and primary school teachers attending from across the Nelson Tasman region. The event specifically focussed on nature connection and resilience; looking at how spending time in nature can positively impact the well-being of both teachers and students. The day included guest speakers from the region and a number of hands-on activities within the Sanctuary.



Through teaching teachers, we can reach many more students to connect with nature, with all the accompanying health and wellbeing benefits.

RECENTLY SEEN IN THE SANCTUARY

If you have some great photos taken in the Sanctuary that you'd like to share in future issues of eNews send them to: info@brooksanctuary.org.nz

Birds Net Fungus
Crucibulum laeve
© Deb Corbett



Gnat orchid
Cyrtostylis rotundifolia
© Deb Corbett



Hygrocybe sp.
© Deb Corbett



Toutouwai
South Island Robin
Petroica australis
© Chelsea Haley



Lichen fruiting bodies
Dibaeis arcuata
© Deb Corbett



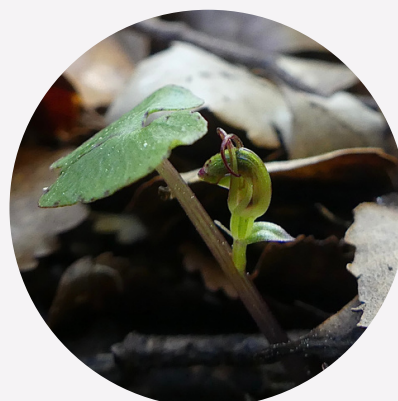
Ngirungiru
South Island Tomtit
Petroica macrocephala
macrocephala
© Deb Corbett



Lichen fruiting bodies
Dibaeis absoluta
© Deb Corbett



Spider orchid with
developing flower
Corybas sp.
© Deb Corbett



SPONSOR PROFILES

JENS HANSEN

SINCE ✱ 1960

Jens Hansen has a sweet spot for kiwis. Its popular, iconic Golden Kiwi pendant, handcrafted in Nelson and sold worldwide, is at the heart of the Jens Hansen Kiwi Establishment Fund.

A portion of proceeds from Golden Kiwi sales supports Brook Waimārama Sanctuary's efforts to reintroduce the kiwi pukupuku (little spotted kiwi). Jens Hansen has committed to four years of funding, which owner and creative director, Halfdan Hansen says is a natural fit for his Nelson-based company.

'When we designed the Golden Kiwi our goal was to honour an iconic New Zealand symbol. Lots of customers, including international visitors, wanted to purchase a piece of jewellery that would remind them of our country - it seemed appropriate to design a kiwi.

For young New Zealanders setting out on their OE it makes a perfect momento. It's also proving popular with Queen Consort Camilla. We often see magazine and social media photos of her wearing the Golden Kiwi pendant she was presented with when visiting Nelson with (then) Prince Charles several years ago.

With Golden Kiwi sales taking off here and overseas, we felt it was time to give something back to our community. We're delighted we can support the Sanctuary in its efforts to create a kiwi-friendly habitat.

We're encouraging locals and visitors to come to our Trafalgar Square store to donate to the Fund. Our electronic 'tap and go' donation device makes it super easy to contribute \$5, and every dollar brings the kiwi closer to its new home.'

Jens Hansen Gold & Silversmith, established in Nelson in 1960, became internationally recognised when company founder Jens and his son Thorkild, also a jeweller, were asked to design The One Ring for Peter Jackson's *The Hobbit* and *The Lord of the Rings* movies. The pair made more than 40 variations of the Movie Ring for the films – scaled for different scenes and different characters, from smaller gold versions for *Hobbit* hands to the 8-inch ring seen in *The Lord of the Rings* prologue. Today, Jens Hansen still makes replicas of this famous ring for fans around the globe and the Nelson studio is a tourist magnet. Domestically, Jens Hansen is better known for its handcrafted custom work which reflects the Danish roots of its founder and namesake.

Jens Hansen Gold & Silversmith
320 Trafalgar Square, Nelson
Phone 03 548 0640
jenshansen.co.nz



[Click here](#) to donate to the Jens Hansen Kiwi Establishment Fund.

BUSINESS CLUB PROFILES



Duke & Cooke have been trusted by Nelson and Tasman property owners for over 60 years being the longest serving locally owned valuation practice. Being a multi-disciplined valuation business, Duke & Cooke covers the three main property types being:

Residential:

Houses, apartments, lifestyle properties, building from plans, sections, and subdivisions.

Commercial:

Offices, retail, industrial, hotels, campgrounds, retirement villages, large utilities (such as airports).

Rural:

Nelson's most experienced rural valuers. We offer in-depth advice for every type of lifestyle or production property.

Rural, lifestyle, dairy, pastoral, orchards, vineyards, forestry, marine and proposed developments.

Duke & Cooke are client focused delivering accurate valuations in required time frames. We are approved registered valuers with a wide range of experience and panel valuers to all major lenders. We also offer expert witness service and assist in dispute resolution. Being a member of ValGroup, Duke & Cooke networks with other valuation firms throughout the country. This membership enables collaborative sharing of market information and data.

LATITUDE SOUTH luxury travel company

Private luxury travel with Latitude South is about unpretentious exclusivity and connection to place. It's about doors being opened to you as an eagerly anticipated visitor – a welcomed guest.

With an emphasis on richly immersive, deeply personalized travel, Latitude South private journeys celebrate the characters, environments, wildlife, culture and the gastronomic delicacies of Australia & New Zealand. We embrace refined, authentic and nonexploitative experiences, personally and carefully curated by some of the most discerning experts in Australia & New Zealand luxury travel today.

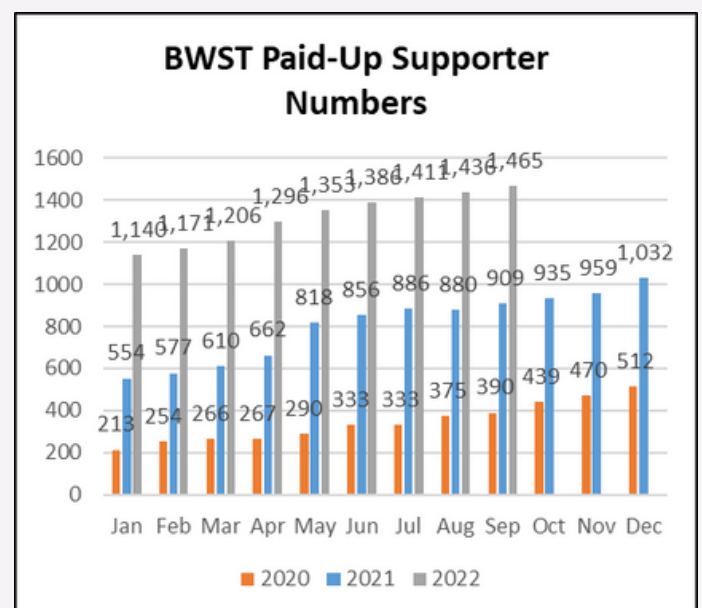
Our people are the gateway to the locations, the special moments and the experiences that reveal the heart and soul of Australia & New Zealand. Each of our uniquely qualified Latitude South guides have the knowledge, connections and affability to ensure your journey is as personally meaningful and comfortable as it can be. Our guides will lead you on spectacular hikes, introduce you to interesting and good-humoured local personalities and take you so far beyond the tourism façade that it will become immediately evident that you are experiencing an uncommon and stunningly beautiful tapestry of luxury, outdoor environments, wildlife, food and the many private and inimitable pursuits available to Latitude South clients.

SUPPORTER NUMBERS CONTINUE TO GROW

In the June edition of eNews we reported that supporter numbers was approaching 1,400, we're now at 1,474 paid-up supporters. If you're uncertain as to whether or not you're a paid-up supporter, contact info@brooksanctuary.org.nz to check.

If you're not currently paid-up, you can become so via the Sanctuary website, [click here](#) for more details, or email: info@brooksanctuary.org.nz

Sanctuary supporters receive free of charge entry to the Sanctuary (on days/times we're open to the general public) and can vote at our AGM.



ENDEMIC SPECIES FEATURE

It's important to celebrate what we already have within the Sanctuary. Some species, such as toutouwai (South Island Robin) and titipounamu (rifleman) are more unique than most of us realise. We aim to profile a species in each issue of our newsletters with the input of our ecologist Robert, volunteers and other staff.

PEKEPEKEKIORE Lions Mane, or Icicle Fungus *Hericium novae-zealandiae*

Our regular endemic species writers Robert Schadewinkel and Katherine Chamberlain are both unavailable this month, so we asked regular photo contributor Rebecca Bowater to write a fungi profile. Rebecca is an authority on New Zealand fungi, as well as being a renowned photographer and author, on the subject. Rebecca writes...

My favourite fungus seen in the Brook Sanctuary. I have several favourites and have decided to tell you about the 'Lions Mane' or 'Icicle Fungus' *Hericium novae-zealandiae* (this is its new latin name, it was previously known as *Hericium clathroides*), its known as Pekepekekiore in Māori.

The first time I spotted this was years ago at Pelorus Bridge Reserve, where this image received a gold medal in the photographic society of New Zealand exhibition, that is why this is one of my favourites.

One day I was in the Sanctuary and spotted this small creamy coloured fungus on a tree trunk and was so thrilled to see it but I didn't have my tripod with me, so the next day I walked towards Ferny Flats again and there it was. I spent time photographing it as it was in good condition without any blemishes. This was the only place I have seen it in the Sanctuary. I have seen it in other reserves in Nelson this year.

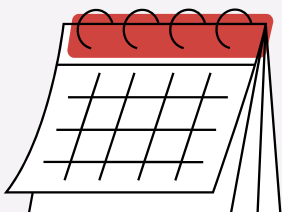
The spores are produced on the surface of these soft spines which hang down. I have seen them in white to cream tones and they always grow on dead wood. Their size can range from 30mm to 250mm. The one featured in the photo was only 40mm.



Photo credit: Rebecca Bowater - taken in the Sanctuary

[Click here](#) to view Rebecca's 2009 New Zealand Photographic Society gold medal photograph of an icicle fungi take at Pelorus Bridge.

Pekepekekiore are edible, the flavour is commonly described as being similar to crab or crayfish, the fungi is often observed to turn a pinkish colour as it ages.



**MARK YOUR DIARY - SANCTUARY OPEN DAY AND
SCULPT NATURE - SUNDAY 23 OCTOBER
FREE ENTRY 10AM - 4PM
MORE DETAILS TO FOLLOW IN DUE COURSE**