



HAKIHEA |
DECEMBER 2024

PAGE 2

Chair's Intro continued
Announcing Chief Executive resignation

PAGE 3

Town office move
Sanctuary opening days/times - Dec-Feb
Sponsor profiles

PAGE 4

Tuatara translocation to the Sanctuary

PAGE 5

Sculpt Nature recap

PAGE 6

Some great holiday gift ideas

PAGE 7

Tough times ahead - can you help?
Gift a Sanctuary subscription

PAGE 8

Brook Valley Holiday Reserve update
Nature Passport printing costs appeal

PAGE 9

Recently snapped in the Sanctuary

PAGE 10

Sanctuary History (book) still available
Volunteering
Fire risk climbing

PAGE 11

Mistletoe update

PAGE 12

Visitor graphs and recent large donations
and grants

PAGE 13

Ways you can make a difference
Sanctuary calendars available

PAGE 14

Back yard bird monitoring

Announcing the arrival of tuatara!

The end of the 2024 is rapidly approaching, so I thought it appropriate to reflect a little on the past year before we usher in 2025!

The successful translocation of tuatara to the Sanctuary was a quiet reminder to myself and I imagine for numerous others, on just how critical sanctuaries such as ours are to the environmental and biodiversity future of this country. It was also a reminder of the many parties involved in this work. Viewing the video of this auspicious occasion reminded me that arriving at this point was the result of countless hours of work and dedication by many many volunteers and staff.

Sitting down to write for the last newsletter of 2024, I've been reflecting on four aspects of the Sanctuary's work with, and in, our community.

Visitors

We are building our niche as a visitor destination, as a place to encounter, enjoy and appreciate the natural environment and ecosystem that we are working to restore within the Sanctuary. Visitors from outside the region, and indeed from beyond our national borders are increasing, not by big leaps, but by steady incremental growth. We have multiple opportunities to continue to grow and in doing so support the Sanctuary. We frequently receive comments about the Sanctuary being "one of the best kept secrets of the region"; visitors are often surprised to learn of the native beech forest that is a large part of the Sanctuary, of the many species within the Sanctuary ecosystem including many varieties of fungi, along with increasing numbers of native reptiles such as lizards and skinks and most recently tuatara.

Nelson City Council support over 2024

Advancing Council's forestry transition through adopting 'the Right Tree Right Place' Taskforce work, the community gave resounding support for transitioning from commercial forestry to permanent, biodiverse forests in our conservation and landscape reserves earlier this year. Council's unanimous adoption marked a significant step forward, and the Forestry Transition Working Group will guide this critical work. Council's decision will affect its managed estates of about 10,000 ha that are located close to the Sanctuary by influencing new planting plans on blocks cleared of pine (non-native) forest trees. This gives native biodiversity a chance to expand. On the biodiversity front, council has made meaningful progress in pest and cat management. Nelson and Tasman Councils have progressed cat management bylaws, to promote responsible pet ownership and reduce stray and feral cats; this means more native fauna (such as native birds) will be protected better against the threat of cats,

Continued next page...

CHAIR'S INTRO CONTINUED

Research projects

One aspect gradually coming to the fore is the freshwater qualities of the Brook Stream. Through a partnership with the Cawthron Institute, the BWST has instigated a research project on this waterway which will involve close monitoring of the stream for a period of time. At the conclusion of the research project, a practical manual will be published and made available to volunteers and other, and it will help us to produce informative signs to visitors about the water quality and macroinvertebrates it supports.

Education and student visits.

I found it very encouraging to personally witness 97 excited school children and 30 adults from a local school visit the Sanctuary early December. Split into two groups one viewing the Sanctuary while the other studied the stream then swapping over after an hour. The stream group took samples of water and worked to identify the many invertebrates such as, mayflies, stoneflies, caddisflies, crustaceans, molluscs, comparing what they observed with written resources provided. This exercise is a great hit with the children being both fun and informative. I was delighted to be told that, "there are not many sites around Nelson that the water is so pure that you can see all these macroinvertebrates".

The Sanctuary trustees, along with senior management have further work to do with more species translocations planned, and on ecosystem restoration efforts which will enable the Sanctuary to build on what has been achieved so far, which in turn is the foundation for the Sanctuary in the future.

On behalf of the trustees, we wish you all a wonderful Christmas and let's look forward to another successful in 2025.

Chris Hawkes
Chair, BWST

CHIEF EXECUTIVE RESIGNATION

The Brook Waimārama Sanctuary Trustee Board of Trustees advise that Ru Collin, Chief Executive has resigned and will finish 30 April 2025. The Trustees have accepted Ru's resignation with regret; a search for a new CE to lead the Trust will commence immediately.

Ru joined the Trust in February 2017 as a Trustee, subsequently stepping down as a Trustee in May 2019 to take the reins as Chief Executive. He has spear-headed the board's desire for the Sanctuary to be an attractive destination for domestic and international visitors as well as an important part of the local community. The Sanctuary is poised to become a key visitor destination for Nelson. Supporting ecological restoration has been regarded as most important and during his time with the Trust, the translocation of species that lived in the Sanctuary in early times has been a particular focus with the reintroduction of tiēke, kākārīki karaka and Powelliphanta land snails, mistletoe and most recently tuatara in November. The Sanctuary has grown its supporter base to 2,150 supporters and has embraced the work and expertise of 350+ volunteers. There is now a close working relationship with Te Tau ihu iwi, Department of Conservation, the Nelson City Council and with Jasmine Investments alongside a large group of business supporters. There has also been a significant increase in financial support from individuals and companies that provide tangible support to the Sanctuary and its business and conservation ambitions.

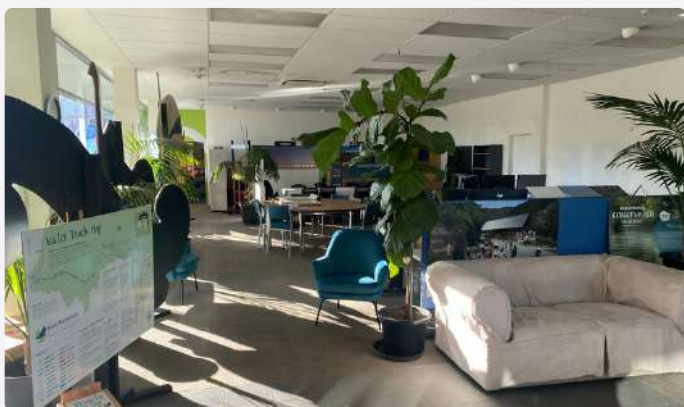
Ru can take considerable pleasure in the achievements of the Sanctuary under his watch. The Trustees will be organising a formal farewell in April.

If you know anyone who might be interested in the Chief Executive position, direct them to the job advert on SEEK Jobs, click [here](#).

TOWN OFFICE MOVE

The town office previously located in Morrison Square has now relocated to Millers Acre (39 Halifax Street), opposite the old iSite office and next door to the Department of Conservation.

The new location is, rather sadly, only temporary, we have it until 1 February as it is earmarked to become the new Nelson eBus terminal. But for now, we're enjoying the light, airy location and are experiencing a significant increase in the number of visitors to our offices, not necessarily to ask about the Sanctuary - but we're managing to work the Sanctuary into our conversations!



SANCTUARY OPENING HOURS: DEC - FEB

The Sanctuary is now operating on our 'summer hours' and is open:

- Tuesday - Sunday, 9am - 5pm (as of 10 December)
- Christmas Day: closed
- Public Holidays (Boxing Day, New Years Day, 2nd January, Nelson Anniversary and Waitangi Day), open 9am - 5pm

The city office will be closed for much of the time between 23 December 2024 to Monday 6 January. Ru and Nick will be working online

SPONSOR PROFILES:

Have you seen the latest campaign from Sanctuary sponsor NBS? Check out what NBS clients had to say about why they bank with NBS. The Brook Waimārama Sanctuary Trust choose to bank with NBS because we understand what NBS does for our community and they are always there for us.

Check it out online: [click here](#) to view NBS' short video



Be in to win a share of
\$25,000
 every month with your
NBS Target Saver Account.

For promotion and draw details, and the full terms and conditions, please visit nbs.co.nz.



Nelson Airport is pleased to continue our support for the valuable mahi of the Brook Waimārama Sanctuary in 2025 through a mixture of financial and in-kind support. Keep an eye out for the Sanctuary's digital advertising in the terminal, flags displayed around the airport precinct road, as well as fun activities and displays throughout the year. The Sanctuary | Nelson Airport partnership is a natural fit. Visitors to our region are looking for experiences that are both sustainable and meaningful. The airport is committed to promoting sustainable tourism, as well as to supporting the wellbeing of our wider community. We're excited to work with the Sanctuary to promote experiences to visitors and locals, while supporting the ongoing restoration of our region's native flora and fauna.

TUATARA TRANSLOCATION

Tuatara have been returned to their ancient homeland of Whakatū Nelson. A momentous event for Ngāti Koata Trust, the kaitiaki of Takapourewa Tuatara, and the Brook Waimārama Sanctuary.

56 tuatara were translocated into the Sanctuary's wilds. Each individual was released into a pre-drilled burrow with a unique "house number." The tuatara were translocated from six different captive source sites from Franz Josef to Palmerston North at:

Central Energy Trust Wildbase Recovery, Wildbase, Ngā Manu Nature Reserve, Wellington Zoo Te Nukuaō, Natureland Wildlife Trust, West Coast Wildlife Centre

[Click here](#) to watch a short (YOUTUBE) video of the translocation events from Rob Edwards.



Robert and the Ngāti Koata translocation team



This article ran in our Nov. newsletter for volunteers, we thought it worth repeating for the wider audience who receive eNews!

SCULPT NATURE RECAP

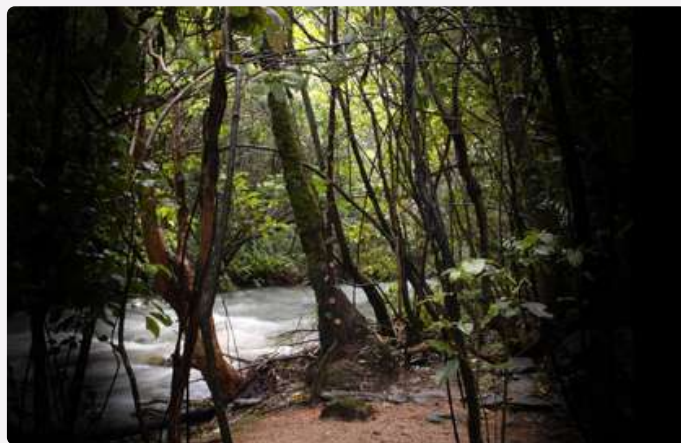
The weeklong sculpture symposium held in the Sanctuary in partnership with the Nelson Arts Festival from 18-26 October this year was a huge success! Seven artists from around the country came to compete. It was inspiring to watch them transform ordinary blocks of stone and wood into breathtaking works of art. Each artist brought their unique vision and style, captivating audiences with their skill and creativity. Visitors were treated to live demonstrations, allowing them to witness the intricate process of sculpting up close. The event fostered a sense of community and appreciation for the arts, as people gathered to admire the evolving creations and engage in conversations about the artists' inspirations and techniques. By the end of the symposium, the Sanctuary was adorned with stunning sculptures that would remain as a testament to the creativity and talent that had been showcased.

The artists formed a great bond throughout the week and will likely be friends forever, as stated in many of the awards ceremony acceptance speeches. In the end, they really got to see and experience the mahi of the Sanctuary first hand and having those 10 days to really get to know the space and their fellow sculptors, was an experience they will cherish forever.

Our thanks to the following for Sculpt Nature event funding: Annie Curry Legacy, City of Nelson Civic Trust, Nelson City Council, and several anonymous private donors.



Artists from left to right: Donald Buglass, Te Ua Hamuera, Cheremene Castle, Jamahl Kappely, Nicholas-Duval Smith, Fay Troote, and Simon Te Wheoro.



First Prize: Closer (to nature) by Nicholas Duval Smith. This immersive sculpture is best seen in person at the Middle Dam



Second Prize: Pūtangatanga (Tree Weta) by Cheremene Castle



People's Choice Award: Archey's Palace of Fungi by Jamahl Kappely

HOLIDAY GIFT IDEAS

The Visitor Centre and our online shop ([click here](#)), are loaded with lots of goodies just in time for the holidays.

Our top picks:

1. 2025 Sanctuary Calendar
2. Tuatara t-shirts - \$48 (or \$38 for kids sizes)
3. Tuatara long-sleeve shirts - \$58
4. The First 20 Years of the Brook Waimārama Sanctuary (\$35.00) - while stocks last!
5. Manuka Honey (only available at the Visitor Centre)



TOUGH TIMES AHEAD

Like virtually every not-for-profit organisation in the country, the Sanctuary Trust is experiencing tough times - it's getting more challenging to pay our bills and fund much needed projects! Most of our costs are rising and at the same time our income from grants, donations and other sources is shrinking, for example, we've had very little in the way of success with our larger grant applications this calendar year.

So to the many individuals who make regular donations a huge THANK YOU!

If you're in a position to assist in any way, be it regular donations or one-off payments, please do get in touch with us. We're always in need of 'untagged funds', money that can be used to pay our general expenses, everything from our power bill to buying stationery or paying the office rent. We also have some future projects that aren't yet covered, for instance:

- Pest fence strengthening
- Future translocations, such as kiwi and kākā

[Click here](#) to make a donation to the Sanctuary.

If you'd more information, or to discuss ways that you can help, contact:

Ru Collin, Chief Executive,
ru.collin@brooksanctuary.org.nz or

Nick Tilly, Office Manager
nick.tilly@brooksanctuary.org.nz

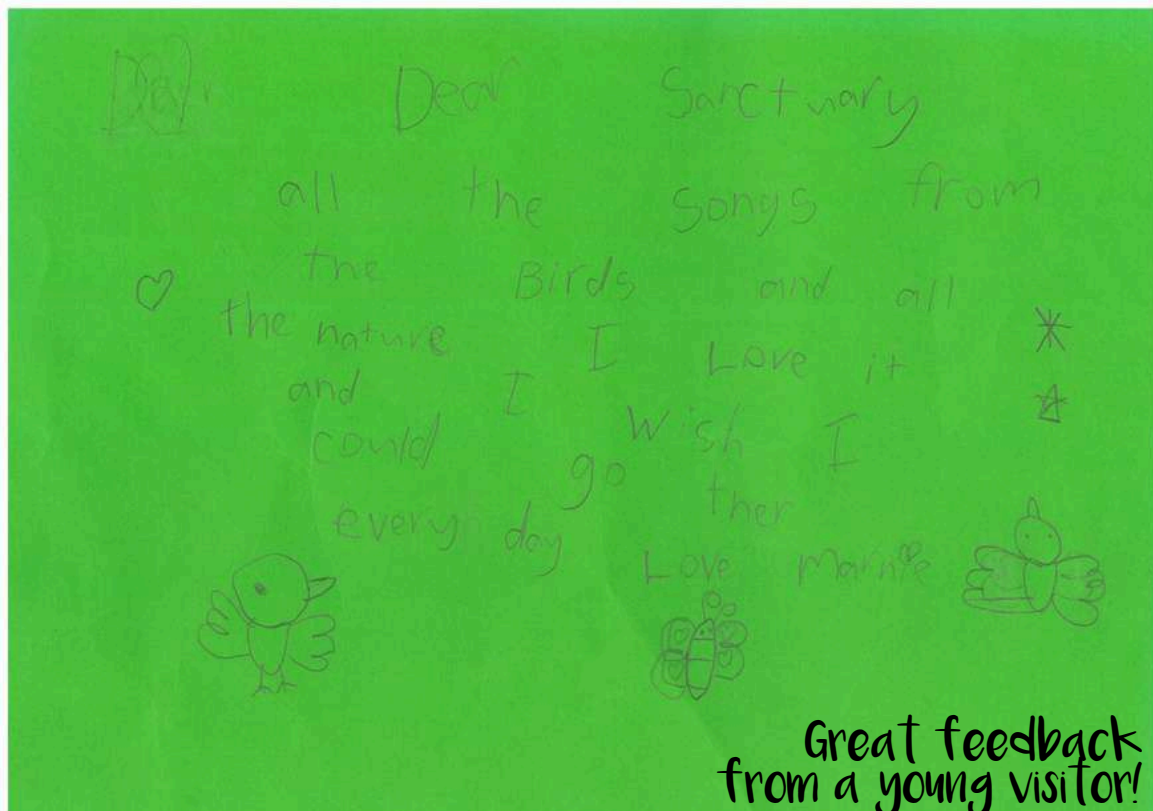
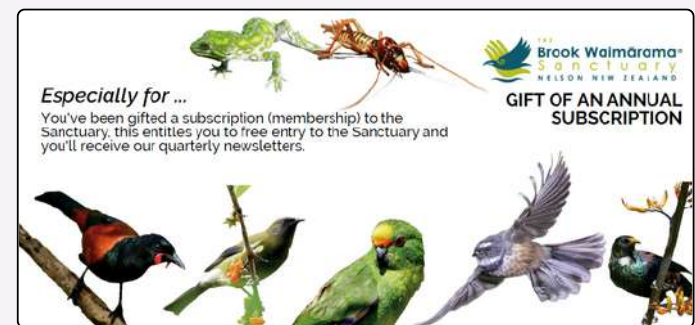
GIVE THE GIFT OF A SANCTUARY SUBSCRIPTION

We've made it easier for people to purchase/gift a sanctuary supporter subscription to another person or family with the addition of a new page on the website specifically for this purpose. Sanctuary subscriptions are a great gift idea for friends, family, employees and work colleagues.

Click on the image below to purchase/gift a subscription.



We can also create a personalised voucher for you to slip into a birthday or Christmas card. Contact us to discuss these - info@brooksanctuary.org.nz



THE BROOK VALLEY HOLIDAY RESERVE

As you will be aware, the Sanctuary Trust took over the operational management of the Brook Valley Holiday Reserve (aka the Brook Camp) effective 1 June 2024.

Since then, the Trust has been directing significant efforts into improvements and new developments which are all intended to make the holiday reserve a more attractive place to visit, stay or live.

Improvements and repairs have included installing new shower controllers, a significant list of minor repairs and maintenance, purchasing new chattels, some landscaping improvements removing tree stumps and leveling some of the grounds.

Over the last month or so, a team of Sanctuary volunteers under the direction of Ru, Tom Brett and Neil Johnstone have been painting some of the camp buildings, and mural artist Sean Duffell has been hard at work lifting the visual appeal of a number of the buildings.

Very soon new signage/way finding will be installed.

From the mural artist, Sean Duffell ...

As a full time travelling Artist I encounter so many varied places and people all across Aotearoa and the world but none as serene and beautiful as the Brook Camp area. It was a privilege to be asked to paint the Brook Camp and spend some quality time in such a still and peaceful environment. I had previously painted murals 2 years ago in the Sanctuary and was excited to be coming back again.

Painting all day and then camping in my campervan at night hearing the ruru call and seeing the shadows of the family of deer surrounding the van was truly magical and an easy way to fall asleep. The dawn chorus of bird song was also incredibly pleasurable to wake up to before hitting the walls.

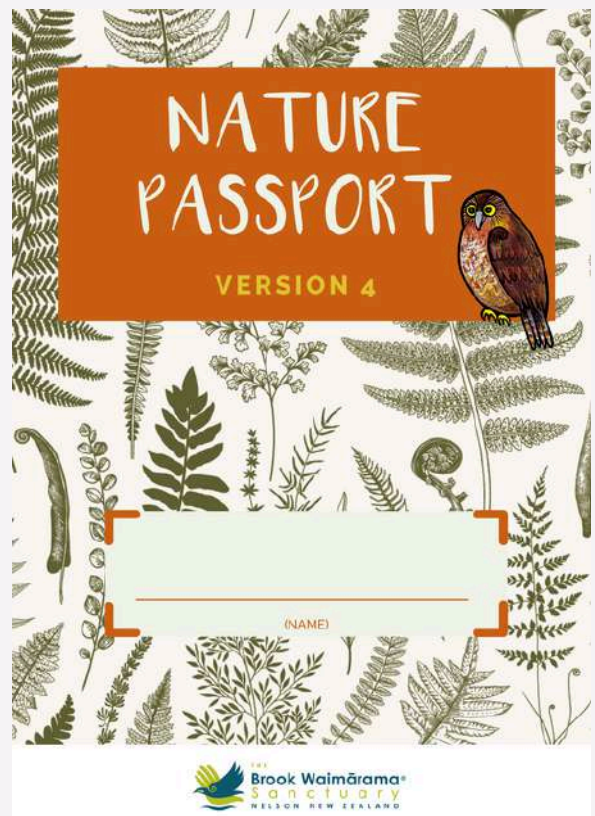
I write this whilst on the ferry off to Wellington and I'm already planning when I can next return and hopefully see some of the new tuatara who have just arrived.



CAN YOU HELP? RESOURCE PRINTING

We're also appealing for funds to help us print more Nature Passports for our young visitors. These were originally developed by Shani Bennett, and have proved to be enormous popular with kids and families visiting the Sanctuary - we've love to print more. Unfortunately, we've only got enough tagged funds left to print (about) 50 of these 20 page booklets.

Last year we printed 2,000 copies at a cost of \$1985+GST



RECENTLY SNAPPED IN THE SANCTUARY

If you have some great photos taken in the Sanctuary that you'd like to share, please tag us on Instagram and Facebook @brooksanctuary or email them to events@brooksanctuary.org.nz



Pink orchid flower
Caladenia variegata
Photo credit: Steffi Kuenstle



White orchid flower
Thelymitra longifolia
Photo credit: Steffi Kuenstle



Green orchid flower
Chiloglottis cornuta
Photo credit: Steffi Kuenstle



White orchid flower
Caladenia chlorostyla
Photo credit: Steffi Kuenstle



Misty morning on tuatara spur
Photo credit: Steffi Kuenstle



Misty morning on tuatara spur
Photo credit: Steffi Kuenstle



Mistletoe seedling
Peraxilla colensoi
Photo credit: Chelsea Haley

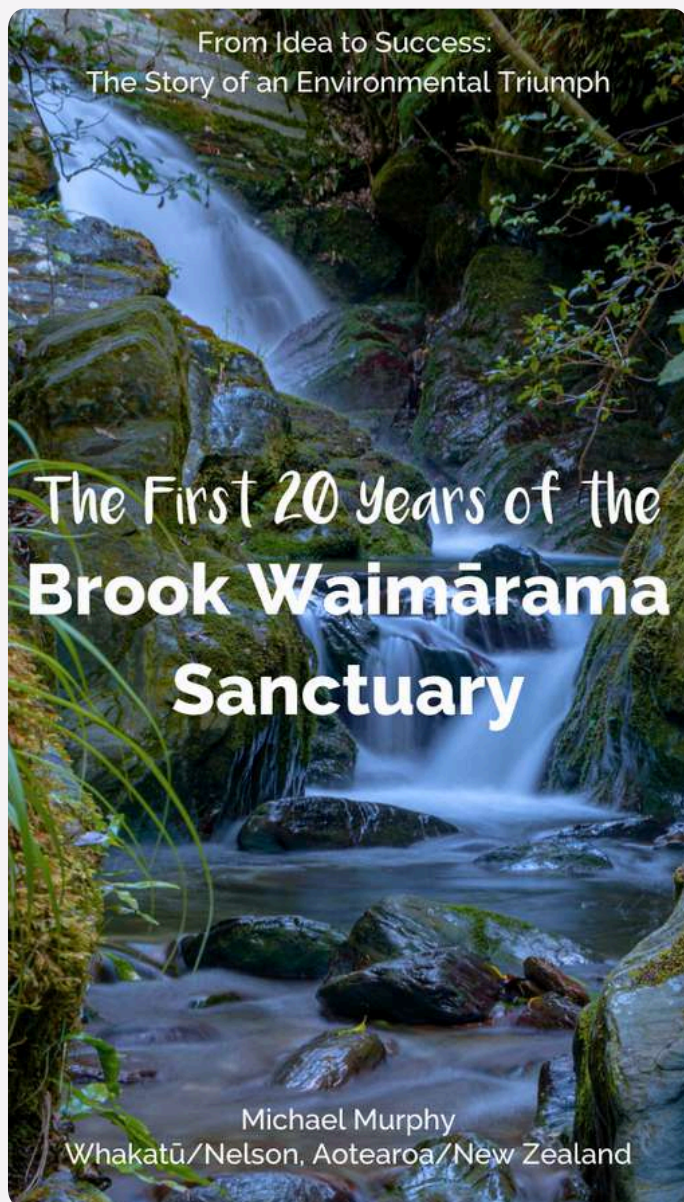


Kākāriki karaka
Cyanoramphus malherbi
Photo credit: Sean McGrath



Bush Giant Dragonfly
Uropetala carovei
Photo credit: Henry Hart

SANCTUARY HISTORY



We still have (a very limited number) of hard copies available for purchase, you can buy your copy through the Sanctuary website, click [here](#) to order yours in time for Christmas!

Copies are also available from the new town office at Millers Acre (next door to the Dept. of Conservation).

VOLUNTEERING

We are always looking for new volunteers. If you're interested in being part of a dynamic team, please email volunteerconnector@brooksanctuary.org.nz

Join the Brook Waimārama Sanctuary volunteer community and be part of conservation in action! We currently have a variety of volunteer roles available including track cutting and maintenance, wildlife monitoring, fence line monitoring, weed control, events and fundraising, visitor centre hosts, tour guiding and more!

Please get in touch with Sabrina at volunteerconnector@brooksanctuary.org.nz or visit our website for more information, click [here](#).



THE FIRE RISK IS CLIMBING

Nick Robson, our Operations Manager has advised (4 December 2024) that, "The Sanctuary has moved into moderate fire danger today. This does not stop any of our current activities, but if this weather continues, we will start to bring in restrictions in accordance with our fire plan... The fire risk in scrubby areas of the Sanctuary can be very high or extreme even when most of the Sanctuary is at the moderate level."

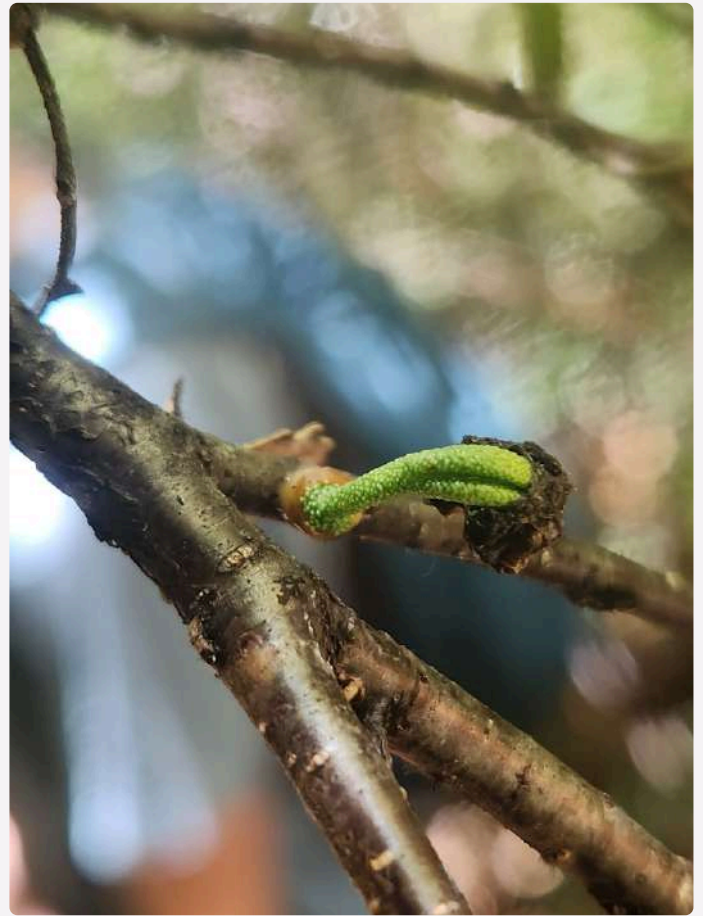
Our staff and volunteers have been advised to carefully consider the nature of the work planned within the Sanctuary, especially on the hot and dry western side of the Sanctuary; if required we will restrict or even close the Sanctuary to all but essential personnel.

MISTLETOE UPDATE

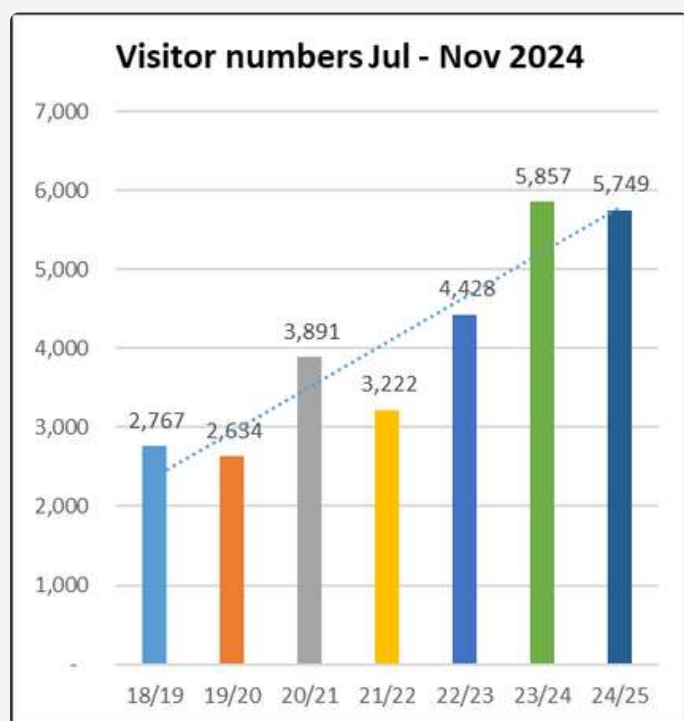
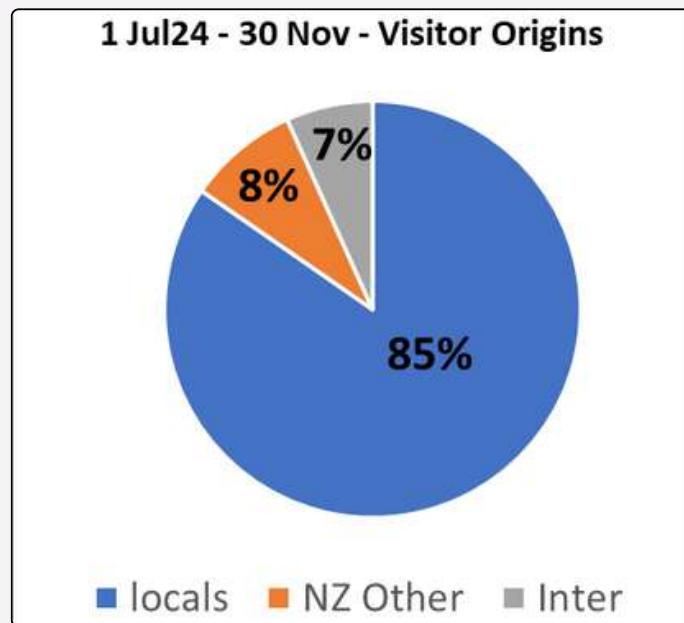
From mid-March to early July this year, Henry and Chelsea (from the weeding team) were busy collecting and setting mistletoe seeds into the beech forest in the Sanctuary.

In the last update around August, they found germinating seeds. A recent check on some of our *Peraxilla colensoi*, scarlet mistletoe, has confirmed that many are now well-established seedlings with their cotyledons (seed leaves) opening!

While it is still early days and we may lose some seedlings to drought and storms, we think the establishment rate has been excellent. We are well on our way to securing scarlet mistletoe within the Sanctuary where it will be safe from possums, and providing our birds and bees with ample nectar.



VISITOR GRAPHS



Visitor numbers 1 July - 30 November 2024.

RECENT LARGE GRANTS AND DONATIONS:

Our thanks to the Booster Wine Group and to WWF-New Zealand for their recent financial assistance (\$9447 and \$15,000 respectively) towards costs associated with the tuatara translocation programme.



Our thanks also to the Save the Kiwi Trust who have given us a grant of \$35,000 (GST exc) for kiwi translocation costs

Our thanks also to Nelson City Council who are providing the funding for the Trust to employ an NMIT Trainee Ranger student over the summer break, the Council grant will enable us to pay the student (Tarlea) for 200 hours; Tarlea is working closing with Chelsea and Henry in the weeding team.

WAYS YOU CAN MAKE A DIFFERENCE TODAY

BUY A YEARLY PASS

The number of paid-up supporters now stands at over 2,000. Why not join today as a financial supporter? Your annual subscription entitles you to free entry to the Sanctuary (on days/times we are open to the public).

If you're already a supporter and need to renew your subscription, you can do that [here](#) on our website.

If you're not a paid-up supporter, we encourage you to become one before prices rise. [Click here to sign up](#)



SANCTUARY CALENDARS ARE STILL AVAILABLE



Stocks of the 2025 Sanctuary calendars are getting low, grab yours soon to avoid disappointment!

Calendars are available for purchase online through the website, and through the Sanctuary Visitor Centre and the at the town office in Millers Acre.



SUPPORT THE FOUNDATION TRUST

You can invest money into the BWST knowing that the funds, no matter how big or small, can achieve a greater impact than what is possible through personal giving.

The foundation illustrates clearly to our key partners and supporters the BWST's intention to build capital reserves, build contingency, and become more self-sustainable over the longer term. For more information, visit [here](#).

VISIT THE NEW CAMPGROUND

BROOK VALLEY
HOLIDAY RESERVE



Need a place to stay? Our campground is located just in front of the Sanctuary.

Book Now: brookvalleyholidayreserve.nz

BACKYARD BIRD MONITORING

By Katherine Chamberlain

As birds thrive within the Brook Waimārama Sanctuary, we anticipate some will spill into the surrounding areas of Nelson, Stoke and Richmond. Garden surveys play a key role in collecting evidence of a halo effect. Between the 14th and 22nd of each month from August to May, monitors report the most birds seen at one time for each species present in their garden during a 30-minute period. In June/July, surveys are 1 hour to coincide with Landcare's Annual Garden Survey.

Garden surveys have been received from a total of 134 locations by more than 90 participants between 2009 and 2023. However, participation has been highly variable. Of the 134 locations, 51 (38%) are represented by only 1 survey. During the last ten years, half the surveys received were from 17 gardens, however, additional monitors have been consistent. Having moved, their surveys have come from different addresses. I am grateful for all contributions, but I am especially grateful for the commitment of a dedicated group of monitors.

Surveys are conducted by different monitors at different locations at different times on different days and in different weather conditions. Some feed birds while others do not. Of those that feed, the types and combinations of foods offered vary greatly. All these confounding variables make for a very noisy dataset. I am grateful to volunteer and retired data analyst Winifred Long for her expertise in untangling and analysing the data.

Tui, korimako/bellbirds and pīwakawaka/fantails are among species that have both increased within the Sanctuary and are capable of living in an urban environment. Counts of all three have also increased among garden surveys. Please note the protocol used in garden surveys differs from five-minute bird counts, so direct comparisons are not possible. However, we can take encouragement from similar trends.

If you are interested in joining the Backyard Bird Monitoring Team or would like to know more, please contact me at brookbirddata@gmail.com.

