

FAN-TALES NEWSLETTER

PIPIRI | JUNE 2026



MESSAGE FROM THE CHIEF EXECUTIVE

Photo credit: Sean McGrath

Recently, we celebrated a remarkable milestone — one year since 41 precious kiwi pukupuku made their home at the Sanctuary, marking another exciting chapter for conservation in our region.

Since then, it's been an incredible journey. From careful monitoring to those quiet, thrilling moments of discovery, we celebrated our first chicks just before Christmas last year and now estimate that 10–15 have successfully hatched within the Sanctuary. A powerful sign that this tiny, rare kiwi is thriving.

Over the past year, hearing kiwi calls in the Sanctuary has been a powerful reminder of what conservation and community can achieve together.

Thanks to the dedication of staff, volunteers, supporters, Te Rūnanga o Toa Rangatira, Save the Kiwi, donors and the wider Nelson community, these iconic birds are beginning to thrive in a safe and protected environment.

From monitoring and pest control to community events and countless volunteer hours, every contribution has helped make this first year a success.

As we celebrate this anniversary, we also look ahead with excitement and hope for the future.

Thank you for being part of this incredible journey.

Ngā mihi nui
Chris McCormack





News & Updates

One Year of Kiwi!

This past year has given us every reason to celebrate, as we mark one year since kiwi pukupuku were welcomed into the Sanctuary. Reaching this significant milestone is a testament to the dedication, care and vision of everyone involved in bringing these precious birds home.

One of the highlights of the year has been the successful recording of kiwi chicks within the Sanctuary — an achievement we are incredibly proud of. Seeing the population begin to grow gives us great optimism for the future and reflects the collective efforts of all those who have supported the project, past, present and future.

The journey has not been without its challenges. Just weeks after the kiwi arrived, the Sanctuary was hit by a major weather event that brought heavy rain and caused widespread damage throughout the area.

During this difficult time, the support from our community was extraordinary. In a short space of time, more than \$100,000 was raised towards repairs, and we were truly blown away by the kindness and generosity shown by individuals, community groups and businesses who came to the rescue.

Their support helped ensure we could continue protecting the Sanctuary, keeping it pest-free and safeguarding not only the kiwi, but also the precious forest that sustains them.

As we look ahead, we are excited to continue building on this success and ensuring kiwi pukupuku and other species thrive for generations to come.

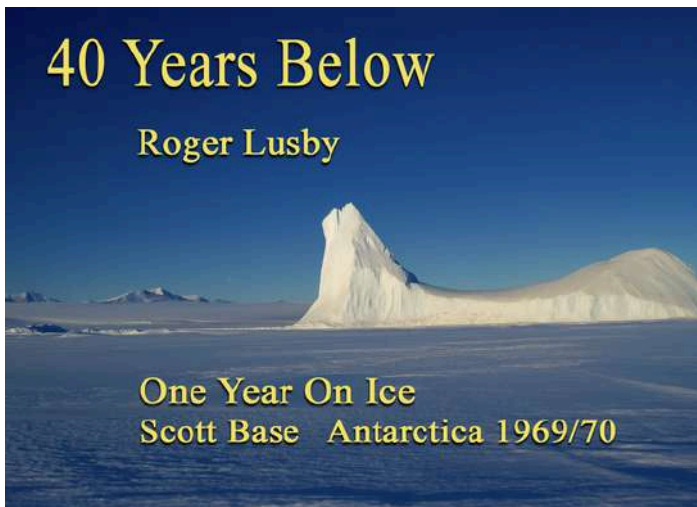


Photo credit: Sean McGrath



Photo credit: Sean McGrath

40 Years Below Fundraiser



Sanctuary Supporters and friends Mid-Winter Celebration, be entertained by Roger Lusby, over the last three years he has created a personal audio-visual show that includes pictures, stories, songs, poems and humor to share his experience - a tribute to Sir Ernest Shackleton.

Celebrate our collective achievements, socialise amongst friends and family in a midwinter atmosphere, enjoy a dine in before and mulled wine.

Book online - suitable for kids and families Raffle and Prizes up for grabs.

All proceeds to the Sanctuary. Lift our community spirits...



Second kākā release!



Nau mai, haere mai ngā kākā!

Yesterday, we released three more kākā into the Brook Waimārama Sanctuary, joining the three released last month.

These efforts are part of our long-term ambitions to reintroduce a thriving kākā population to the Brook Waimārama Sanctuary and the surrounding Te Taihu / Top of the South forests.

Each have been given their name by Ngāti Apa: Rotoiti, Paratitahi and Paraumu.

Our kākā reintroduction efforts are carried out in partnership with Ngāti Apa ki te Rā Tō i with support from the World Parrot Trust, Natureland Zoo, Department of Conservation and Nelson City Council.

Let them be wild – never feed kākā

Photo credit: Fraser Heal

Sanctuary Initiatives

The latest updates



A Fungi Adventure



A huge thank you to Rebecca Bowater, along with our staff members Henry and Chelsea, for supporting the recent Fungi Tours in the Sanctuary.

The tours have been a wonderful opportunity for visitors to explore and learn more about the incredible diversity of fungi thriving throughout the forest.



Photo credits: Rebecca Bowater and Chris Bernard

Discover the Ngahere After Dark



Experience the magic of the forest on a guided night tour. After a brief introduction at the Visitor Centre, head into the ngahere with our knowledgeable guides as it comes alive after sunset.

Listen for ruru and kiwi pukupuku, and take in the soft glow of resident glowworms beneath towering trees. All proceeds support the Sanctuary's vital conservation work.

We can also accommodate large group bookings — please get in touch to discuss options.

Book your night tour - contact us today or book online.

Sanctuary Merchandise



Looking for a new cup or a gift for someone special? Our enamel Campster Mug is a perfect gift. Durable and stylish, it's perfect for enjoying your morning coffee at home or by the campfire.

Available now for \$25 at the Visitor Centre and the Sanctuary Town Office.

We also have a variety of merchandise in the Sanctuary Visitor Centre - including these uniquely designed tuatara t-shirts

Foundation Trust

The Brook Waimārama Sanctuary Foundation Trust exists to act as the Sanctuary's philanthropic and investment arm, receiving, protecting, and growing gifts, bequests, and endowments.

Its purpose is to:

- Build a significant capital fund that supports long-term sustainability.
- Provide an independent, trusted avenue for donors to make impactful contributions.
- Ensure funds are responsibly invested, transparent, and clearly separated from operational funding.
- Generate income for annual Sanctuary operations and, when appropriate, capital for major projects.

The mission of the Foundation is to create a long term, reliable funding stream solely for the benefit of the Sanctuary and its conservation vision.

Quiz Night



Round up your smartest mates and join us for a fun night of trivia, laughs, and good banter.

Great prizes up for grabs, cold drinks flowing, and plenty of friendly competition.

Get your team together and come test your knowledge!

Date: Tuesday, 23rd June - 7:00pm start,
Location: Sprig & Fern - The Meadows | 4a Central Park Lane, Richmond, Nelson



Kalyan Yoga: in the Sanctuary

Gather at The Beech Glade classroom, within the beautiful Brook Waimārama Sanctuary, for a gentle and grounding hour of guided meditation in nature.

This session weaves together simple seated and walking practices designed to help focus and quieten the mind, supporting a deeper experience of presence and awareness. Surrounded by the sounds and stillness of the natural world, you'll be invited to slow down, reconnect, and come home to Presence.

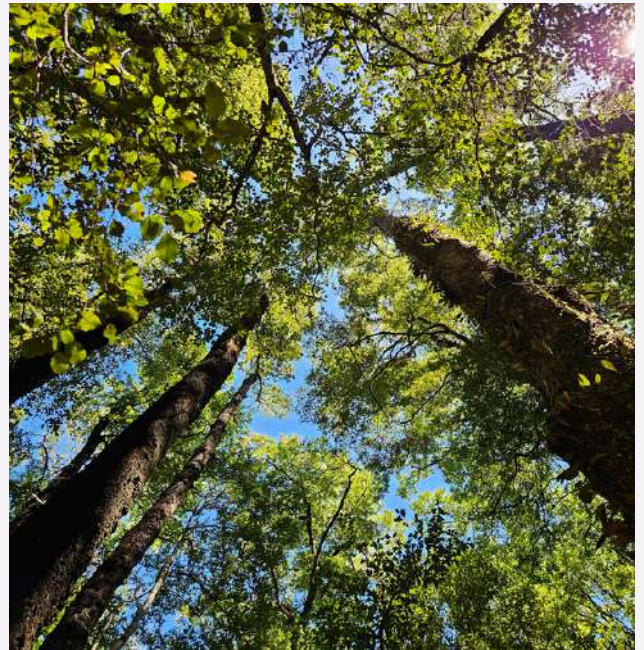
When: 2nd and 4th Sunday of the month, next session 14th June | 9:00–10:00am

Where: Meet at The Glade (please arrive 15 mins early to allow time to walk in)

Entry & Koha: \$5–\$10 koha donation, paid in cash directly to the meditation teacher

Sanctuary Members: Free entry as part of your annual membership benefits

Non-Members: Early bird special: \$10 per adult



Bookings: Not required, just turn up to the session.

Contact: namaste@kalyanyoga.com



www.help-nature-thrive-at-brook-waimarama.raiselysite.com

Raisely

We're excited to share that the Sanctuary is now on the [Raisely fundraising platform](https://raisely.com), making it even easier for our community to support the important work happening here every day – while also helping us reach supporters globally.

Every contribution, big or small, helps us continue vital conservation work and grow a thriving environment for wildlife and our community to enjoy.



Kaitiaki (Guardian) Membership

Our Kaitiaki (Guardian) membership (formerly the Brook Business Club) is the ideal sponsorship for businesses of any size — \$1,000 per year or \$100 per month + gst.

Kaitiaki receive:

- Opportunity for collaborative opportunities through social media
- Acknowledgment on the Brook Sanctuary website with a hyperlink to your website
- Display the Sanctuary logo on your website or marketing materials
- Add a dedicated partnership page on your website
- 5 individual or 2 family memberships
- 10 general admission passes to share,
- 20% off tours for your team or clients

Contact Chris directly - chris.mccormack@brooksanctuary.org.nz



Thanks to Nelson Pine Ltd

Nelson Pine Ltd continues to be a valued supporter of the Sanctuary, and we would like to sincerely thank them for their ongoing generosity and commitment.

Their support helps us continue our conservation work and create meaningful experiences for our community and visitors alike. Partnerships like this make a real difference, and we are incredibly grateful to have Nelson Pine Ltd alongside us on the journey.



The Free House Pub - Kākā Ale

A huge thanks to Eelco and the team at the Free House Pub for creating a special kākā Ale in support of the recent kākā arrivals to the Sanctuary. The ale will be available from Monday 8th June.

With 10% of sales being donated to the Sanctuary, it's a great excuse to enjoy a warm meal and a pint while helping support our incredible work.

Burnt orange in colour — inspired by the feathers around the eyes of the kākā — this slightly misty pale ale features a touch of pōhutukawa honey, along with locally foraged hīnau and miro berries.

NBS - Community

Did you know that the more people who bank with NBS, the more NBS can give back to the community and support clubs just like ours?

We're proud to be sponsored by NBS and be part of giving back to our local community.

NBS is not a registered bank.

www.nbs.co.nz



Thank you to our Business Supporters

We're grateful to our Business Club & Kaitiaki members for their ongoing support of the Sanctuary. Their contributions help us protect native species, maintain our unique environment, and welcome visitors to experience the ngahere.

You can learn more about some of our Business supporters here:

[Beca Ltd](#) - Kaitiaki Member

[Nelson Coachlines](#) - Kaitiaki Member

[UpShift](#) - Kaitiaki Member

[Gibbons](#) - Business Club

Find out more: www.brooksanctuary.org.nz/support-us/sponsors

Strategic Supporters





Become a Sanctuary Volunteer!

The Sanctuary is only possible thanks to the dedication and care of our 300-strong community of volunteers. Each year, they contribute over 20,000 hours, and we simply couldn't do it without them—they are the backbone of everything we achieve.

We are currently looking for volunteers to help in the following areas:

- Asset Management
- Fish Support
- Track Maintenance
- Weeding
- Events & Promotion
- Tour Guiding
- Visitor Centre Hosting

If any of these opportunities sound like a good fit for you, we'd love to hear from you. Please get in touch to show your interest.

Recent snaps in the Sanctuary



Hypholoma sp - Photo by Chelsea Haley



Coral Fungus Clavaria sp - Photo by Rebecca Bowater



Kākā Nestor meridionalis - Photo by Fraser Heal



Mycena mariae - Photo by Rebecca Bowater



Adventure Film Festival 2026

MD Outdoors presents their Adventure Film Festival.

A celebration of the people, places, and wild adventures that make New Zealand so special. This is about local films made by normal people— the weekend and everyday adventurers who get out there and just do it.

It's grassroots, it's real, and it's all about showcasing the epic missions and moments happening here in our own backyard. Come be inspired, support local storytellers, and celebrate raw Kiwi adventure.

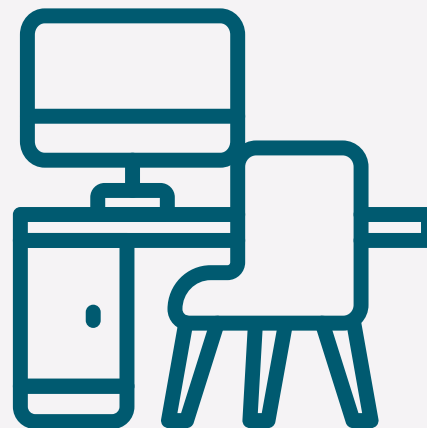
- Friday 17 July 7-9pm
- Saturday 18 July 3-5pm
- Saturday 18 July 7-9:30pm *Winners announced at awards night!*

With four award categories, the audience get to vote for our People's Choice award at each Nelson screening.



Small Office Space available

We have a small office space available for rent at our Sanctuary Town Office — ideal for a small team or individual workspace. For enquiries or to arrange a viewing, please contact Nick - nick.tilly@brooksanctuary.org.nz



TRANSITIONING TO NEW DATABASE SYSTEM

We are currently part way through transitioning to a new database system (ZOHO).

We are getting closer to fully automating the process of issuing donation receipts and membership cards for new and renewing members. We anticipate that there will quite possibly be a few hiccups along the way - we ask for your patience as we work to get the new system up and running correctly!

Become a Sanctuary Member



Why Become a Member?

Becoming a member of the Brook Waimārama Sanctuary means you're directly supporting the protection and restoration of native wildlife while enjoying year-round access to one of the South Island's most unique conservation landscapes.

Membership benefits include:

- Unlimited Sanctuary entry — visit as often as you like to walk, explore, and reconnect with nature - during our opening hours
- Priority access to events and experiences — from guided tours to seasonal activities and expert talks.
- Monthly Fan Tales newsletter – our avidly read monthly newsletter sent out to over 5000 people all over the world
- Support for conservation action — your membership funds weed and pest control, habitat restoration, and species reintroduction programs.
- Connection to the Sanctuary community — invitations to member briefings, behind-the-scenes updates, and impact reports.

Becoming a member is more than a ticket — it's a commitment to sustaining native forest, wildlife, and a legacy that future generations can enjoy.

TRANSITIONING TO NEW DATABASE SYSTEM

We are currently part way through transitioning to a new database system (ZOHO).

We are getting closer to fully automating the process of issuing donation receipts and membership cards for new and renewing members. We anticipate that there will quite possibly be a few hiccups along the way - we ask for your patience as we work to get the new system up and running correctly!



Social Media Highlights

What's been happening online:

Roly-poly kiwi chick video a major hit!

This kiwi pukupuku chick spots a shortcut, takes a spectacular tumble, then pops right back up and gives it another go — making it up the bank on the second attempt. A tiny fluff ball with a big lesson in determination.

This has become one of our most viewed videos ever:

- 875,333+ views
- 58 days, 16 hours, and 55 minutes of watch time
- Saved 79,000 times
- Shared 29,000 times

It's even gone international, with 19% of viewers tuning in from the USA, and thousands more watching from Mexico, Chile, Brazil, and Germany. Best of all, this little kiwi has inspired 278 new people to follow our Instagram journey.

If this video made you smile, share it with someone who could use a little determined kiwi energy today.

Support the future of the Sanctuary

The return of kiwi and other threatened species to the Sanctuary is only possible because of the ongoing support of our community. Every donation helps protect not only kiwi, but many other native species that call the Sanctuary home.

Your support contributes to vital pest control, habitat restoration, species monitoring, and education programmes that ensure future generations can experience thriving native wildlife in Nelson.

Whether large or small, every contribution makes a real difference. By donating you are helping create a safer future for kiwi, tuatara, native birds, insects, and the unique forest ecosystems they depend on.

Thank you for standing with us and helping nature flourish.



Keep up to date on Socials

Keep up to date on our socials for the latest news, updates, and behind-the-scenes content.

Follow us to stay connected and never miss an announcement.

